



networks@work

Quick Install Guide

Wireless 108Mbps Super-G
XR™ USB 2.0 Adapter

WLU108G

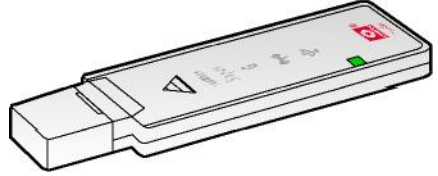


Table of Contents

1: Introduction	1
Packaging Content.....	1
2: Drivers & Utility Installation.....	3
3: Remove USB Adapter from the System	12
4: Un-install Compex WLU108G Utility	14
Warranty Registration Card	19

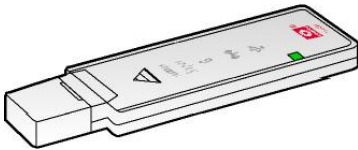
1: Introduction

Complex WLU108G is a thumb-sized USB adapter with Super-G advantage, which enhances the performance of IEEE 802.11b/g more powerfully and efficiently. With its plug and play operation, easy-to-use configuration utility and small size, it not only eliminates the usual hassle of hardware installation but also gives you fast reliable Internet access.

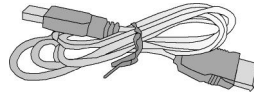


Packaging Content

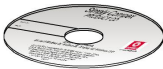
Actual product appearance may slightly differ depending on the hardware version.



1 x Complex WLU108G



1 x External USB cable



1 x Product CD



1 x Read-Me-First Note

Important notes to remember:

- ♦ Designed with a USB2.0 interface, the Complex WLU108G can provide 40 times higher throughput when connected to the USB2.0 slot of your PC/notebook. It is also backwards compatible with USB1.1 through the throughput will then be limited to the 12Mbps of the USB1.1 standard.
- ♦ The router/AP that you are connecting to using the WLU108G must be enabled with Super G technology in order to achieve higher throughput.

2: Drivers & Utility Installation

The following installation process is based on Windows XP.

Step 1

Insert Compex WLU108G directly into the USB slot of your PC/notebook.

Or

Use the USB external cable provided to attach the WLU108G to the USB slot on your PC/notebook.

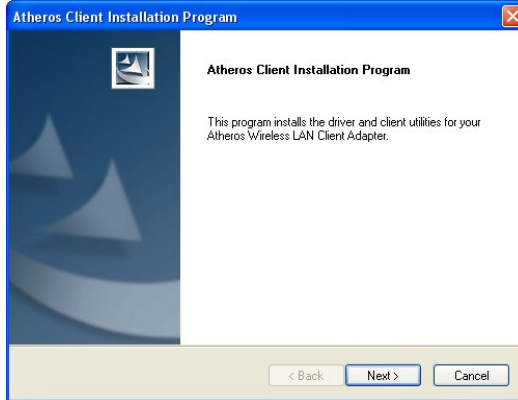


Step 2

Next, insert the Product CD into your computer CD-ROM drive. Click on **Driver/Utility** and the system will run the *setup.exe* automatically.

Step 3

Next, the **Atheros Client Installation Program** screen appears. Click on the **Next>** button to proceed.



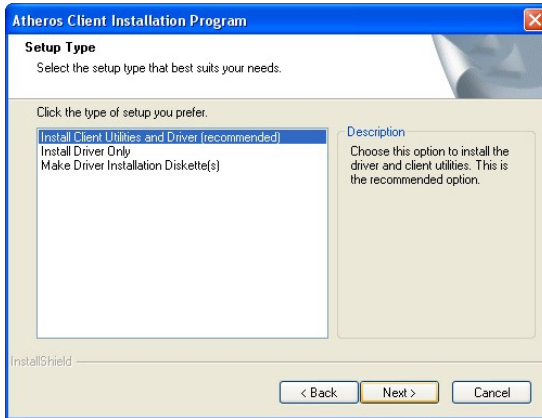
Step 4

When the License Agreement screen appears, you are required to read and accept the agreement to continue. Click on the **Next>** button to proceed.



Step 5

Select your preferred setup:

**Install Client Utilities and Driver (Recommended) option**

You are recommended to select this setup type. This option will install both the drivers and utility that support your USB adapter.

Install Driver Only option (For Windows XP user only)

Select this option if you are going to use the Wireless Zero Configuration Utility to configure your USB adapter. Note that only Windows XP comes with the Wireless Zero Configuration Utility.

Make Driver Installation Diskette(s)

Select this option if you wish to make a duplicate copy of the drivers and store in the diskette/s.

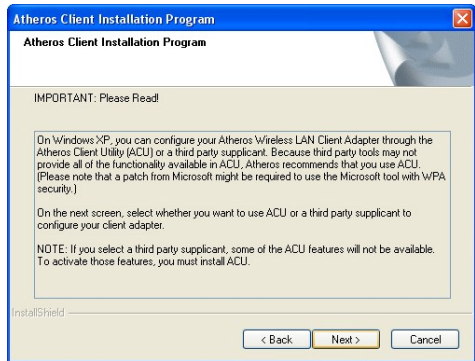
Step 6

Click on the **Next>** button and follow the instructions stated on the screen.

Step 7

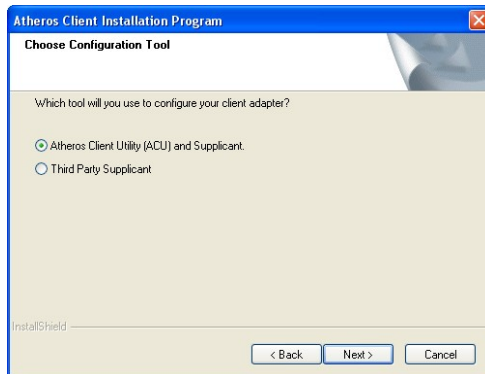
For Windows XP users,

If you are using Windows XP as operating system, the following screen will appear. Read the notice carefully and click on the **Next>** button to proceed.



Step 8

Select your choice of tool to assist you in configuring your USB adapter. Click on the **Next>** button to proceed.



Atheros Client Utility (ACU) and Supplicant option

Select this option to install your WLU108G utility. (Recommended)

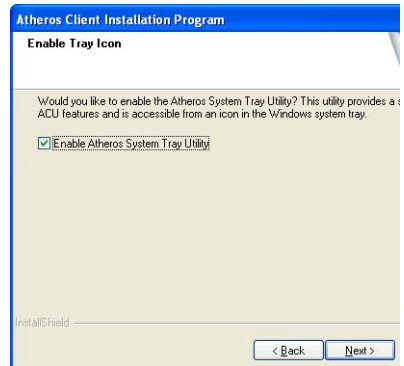
Third Party Supplicant option

Select this option if you decide to use Wireless Zero Configuration Utility to configure your wireless device. Installing this tool will only allow you to view the status of the connected wireless device/s; configuration using the WLU108G utility will not be allowed.

Third Party Supplicant option (continued..)

If you have selected **Third Party Supplicant** configuration tool, a screen similar to that on the right will appear, prompting you to enable/disable the system tray icon.

Click on the checkbox besides **Enable Atheros System Tray Utility** and click on the **Next>** button to proceed.



Step 9

The screen below appears to inform you that the installer will automatically install the driver if you have inserted your client adapter.



Cancel the **Found New Hardware** Wizard if it appears and click on the **OK** button to begin the installation.

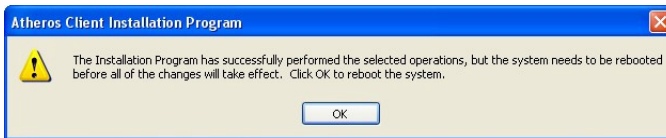
Step 10

Once a similar screen similar to the one shown below appears, click on the **Continue Anyway** button to continue the installation.



Step 11

Click on the **OK** button to reboot your system and this will complete the installation.



To confirm if the driver has been successfully installed on your system,

Step 1

Proceed to your desktop, right click on **My Computer** and select **Properties**.



Step 2

Select the **Hardware** tab and click on **Device Manager**.



The folder name, **Atheros USB 2.0 Wireless Network Adapter** will appear in the **Network Adapters** section. This indicates that the driver for Compex WLU108G has been successfully installed on your system!



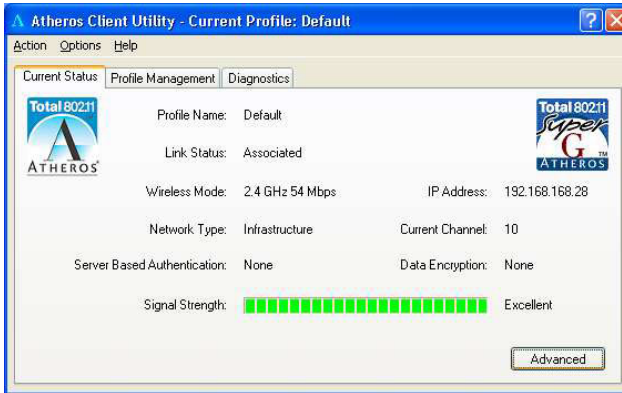
To activate the utility program, double click on the icon shown in the system tray.



Once you click on the utility option, the following screen will appear to give you a glimpse of your connection status. To exit it, click **OK**.



To use the **Atheros Client Utility**, go to the **Start** Menu followed by **Programs**. Then select **Atheros**. From **Atheros**, select **Atheros Client Utility**. You may now start to configure your Compaq WLU108G.



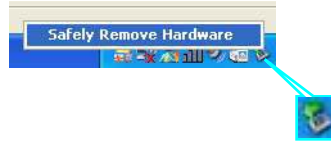
For details on using the utility, refer to the User's Manual stored in the Product CD.

3: Remove USB Adapter from the System

To safely remove your USB adapter from your system,

Step 1

From the system tray, go to **Safely Remove Hardware** icon and click **Safely Remove Hardware**.



Step 2

Select **Atheros USB 2.0 Wireless Network Adapter** and click on the **Stop** button to terminate all activities.



Step 3

Next, select **Atheros USB 2.0 Wireless Network Adapter** to confirm you will be removing it from the USB port and click on the **OK** button.



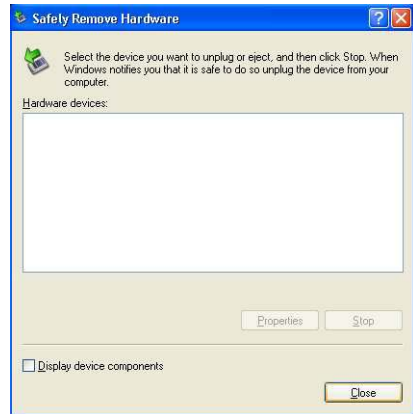
Step 4

The system will then inform you that the device can now be safely removed from the system.



Step 5

Click on the **Close** button to exit this window.



4: Un-install Compex WLU108G Utility

Please note that in case there is a software upgrade for WLU108G, you will need to un-install the current software version before installing the new software.

Also note that if you wish to un-install BOTH the drivers and utility, do not remove your Compex WLU108G from the USB slot of your PC/notebook.

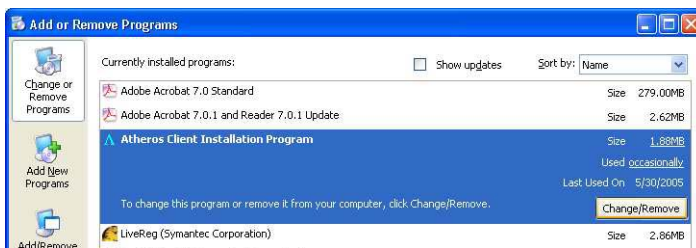
When you un-install the WLU108G software, any existing profiles will be removed. If you want to re-use your profiles, please refer to the User's Manual for further details on how to export a profile to disk. You are advised to close all programs before un-installing your Compex WLU108G.

Step 1

From your **Start** menu, go to **Settings, Control Panel** and then click on the **Add or Remove Programs** icon.

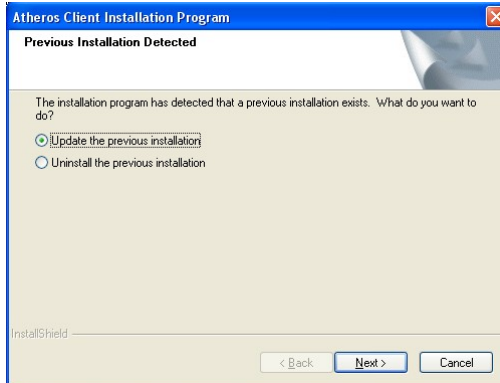
Step 2

Highlight the **Atheros Client Installation Program** and click on the **Change/Remove** button.



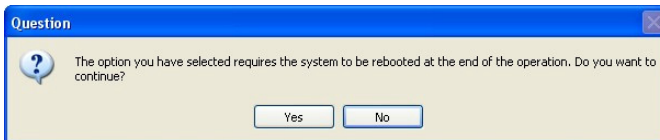
Step 3

Wait until you see the **Atheros Client Installation Program** screen. Select **Uninstall the previous installation**. Then click on the **Next>** button to proceed.



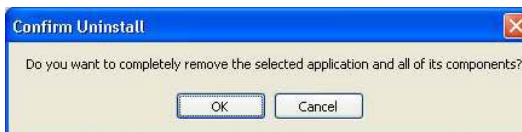
Step 4

The prompt screen appears to notify you that the uninstall option requires the system to be rebooted at the end of the uninstall process. Click on the **Yes** button to proceed.



Step 5

Your system will prompt you to confirm whether you want to remove the application completely. Click **OK** to proceed.



Step 6

After about 30 seconds, you will be asked to decide whether to remove the device driver or not. If **Yes**, the device driver will be removed. Otherwise if **NO**, the device driver will not be removed.

Step 7

Once you have made your decision, the uninstall process will begin. Soon the prompt screen will appear informing you that the uninstall process is successful, and that your system needs to be rebooted.

Click **OK** to reboot the system.

Further Information References

This document may become superseded, in which case you may find its latest version at: <http://www.compex.com.sg/home/download.asp>

Disclaimer: **Compex, Inc.** provides this guide without warranty of any kind, either expressed or implied, including but not limited to the implied warranties of merchantability and fitness for a particular purpose. Compex, Inc. may make improvements and/or changes to the product and/or specifications of the product described in this guide, without prior notice. Compex, Inc will not be liable for any technical inaccuracies or typographical errors found in this guide. Changes are periodically made to the information contained herein and will be incorporated into later versions of the guide. The information contained is subject to change without prior notice.

Trademark Information: **Compex®**, **ReadyLINK®** and **MicroHub®** are registered trademarks of **Compex, Inc.** **Microsoft Windows** and the **Windows logo** are the trademarks of **Microsoft Corp.** **NetWare** is the registered trademark of **Novell Inc.** All other brand and product names are trademarks or registered trademarks of their respective owners.

Notice: Copyrights © 2005 by Compex, Inc. All rights reserved. Reproduction, adaptation, or translation without prior permission of Compex, Inc. is prohibited, except as allowed under the copyright laws.

Manual Revision by Ong

Manual Number: M-0455-V1.2C Version 1.2, June 2005

FCC NOTICE: This device has been tested and found to comply with the limits for a **Class B** digital device, pursuant to **Part 15 of the FCC Rules**. These limits are designed to provide reasonable protection against harmful interference in a residential installation. This device generates, uses and can radiate radio frequency energy and, if not installed and used in accordance with the instructions, may cause harmful interference to radio communications. However, there is no guarantee that interference will not occur in a particular installation. If this device does cause harmful interference to radio or television reception, the user is encouraged to try to correct the interference by one or more of the following measures:

- ♦ Reorient or relocate the receiving antenna.
- ♦ Increase the separation between the computer and receiver.
- ♦ Connect the computer into an outlet on a circuit different from that to which the receiver is connected.
- ♦ Consult the dealer or an experienced radio / TV technician for help.

Caution: Any changes or modifications not expressly approved by the grantee of this device could void the user's authority to operate the equipment.

FCC Compliance Statement: This device complies with Part 15 of the FCC Rules. Operation is subject to the following two conditions:

- (1) This device may not cause harmful interference, and
- (2) This device must accept any interference received, including interference that may cause undesired operation.

Products that contain a radio transmitter are labeled with FCC ID and may also carry the FCC logo.

Caution: Exposure to Radio Frequency Radiation.

To comply with the FCC RF exposure compliance requirements, the following antenna installation and device operating configurations must be satisfied:

- a. For configurations using the integral antenna, the separation distance between the antenna(s) and any person's body (including hands, wrists, feet and ankles) must be at least 2.5cm (1 inch).
- b. For configurations using an approved external antenna, the separation distance between the antenna and any person's body (including hands, wrists, feet and ankles) must be at least 20cm (8 inch).

The transmitter shall not be collocated with other transmitters or antennas.

ICES 003 Statement

This Class B digital apparatus complies with Canadian ICES-003.

DECLARATION OF CONFORMITY: *Compex, Inc. declares that the product:*

Product Name: Compex Wireless 108Mbps Super-G XR™ USB 2.0 Adapter

Model No.: WLU108G conforms to the following Product Standards:

This device complies with the Electromagnetic Compatibility Directive (89/336/EEC) issued by the Commission of the European Community. Compliance with this directive implies conformity to the following European Norms (in brackets are the equivalent international standards.)

Electromagnetic Interference (Conduction and Radiation): EN 55022 (CISPR 22)

EMC Standards: FCC Part 15: Subpart B, Subpart C, CE: EN 300 328-2, EN 300 826 (EN 301 489-17)

Low Voltage Directive: EN 60 950:1992+A1:1993+A2:1993+A3;1995+A4;1996+A11:1997.

Therefore, this product is in conformity with the following regional standards: FCC Class B - following the provisions of FCC Part 15 directive; CE Mark - following the provisions of the EC directive.

Manufacturer's Name: Compex, Inc.

Address: 840 Columbia Street, Suite B

Brea, CA 92821, USA

WARRANTY REGISTRATION CARDRegister via the Internet at <http://www.cpx.com>
or <http://www.compex.com.sg>

[M-0088-V2.4C]



To activate the warranty, please complete this card and return to Compex within ninety (90) days from the date of purchase.

Please e-mail this warranty card to support@compex.com.sg.

Product:	Purchase Date:	Model:	Serial No:
Name:		E-mail:	
Company:			
Address:			
Postal/Zip Code:		Country:	
Phone: ()			

Note:

For purchases within U.S.A and Canada, please fax to Compex, Inc. at (714) 482 0332

For purchases outside U.S.A and Canada, please fax to Compex Systems Pte Ltd at (65) 6280-9947

Manual Number:
M-0455-V1.2C
Version 1.2
June 2005

