



networks@work

Quick Install Guide

Compex Wireless-G 54Mbps
CardBus Network Adapter

WL54G 3a

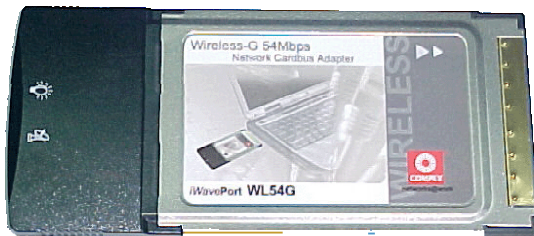


Table of Contents

1: Introduction.....	1
Packaging Content.....	1
2: Installing Utility and Driver	2
3: Configuring Wireless Settings	7
WARRANTY REGISTRATION CARD	14

1: Introduction

The Compex *iWavePort* WL54G is a standard wireless LAN card that fits neatly into your notebook's PCMCIA or Card Bus slot. It uses a new IEEE 802.11g standard which allows the network speeds to dynamically shift up to a high 54Mbps. Besides, as it is downward compatible to the 802.11b world recognized standard, the WL54G gives you wireless accessibility to a network anytime and anywhere. With the support of 64-bit or 128-bit WEP (Wired Equivalent Privacy), it provides additional security for wireless LAN communications.

Packaging Content

Actual product appearance may slightly differ depending on the hardware version.



1 x Compex WL54G



1 x Read-Me-First Note



1 x Product CD

2: Installing Utility and Driver

Please note that the following installation procedures are based on Windows XP. For other operating systems such as Windows 98/98SE/2000/ME, please refer to the Drivers & Utilities Installation Guide in the Product CD.

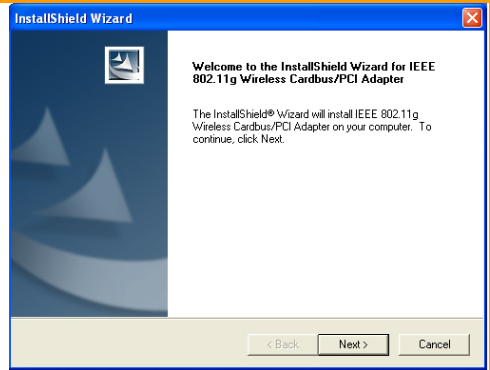


NOTE

You need to install the utility first before installing the drivers. After installing the utility, your system will install the driver automatically.

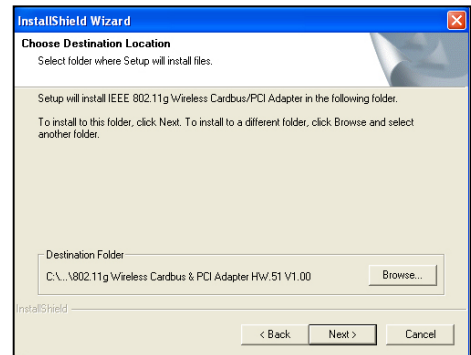
Step 1

Insert the Product CD into your computer CD-ROM drive. The system will run the *setup.exe* automatically. Click **Next>** button to proceed.



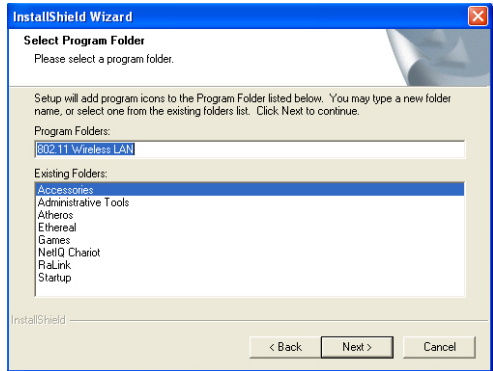
Step 2

Follow the instructions stated on the screen. The system will prompt you if you wish to choose a destination location. Click on the **Next** button to proceed.



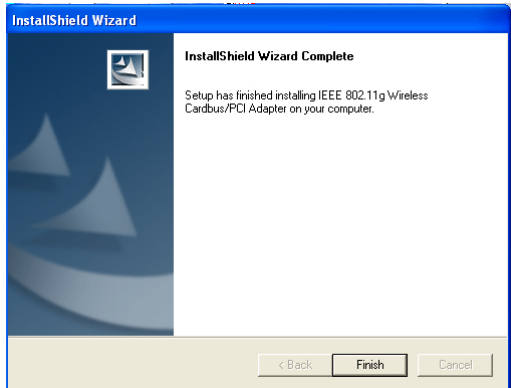
Step 3

Select the program folder which you can install this software. Then click on the **Next** button to start installation.



Step 4

Click on the **Finish** button to complete the installation. You can now proceed to install your driver.



Step 5

Then plug in your WL54G card to your computer. The **Welcome to the Found New Hardware Wizard** prompt screen appears.

Click on the radio button next to **Install the software automatically (Recommended)**.

Then click on the **Next** button to proceed.



Step 6

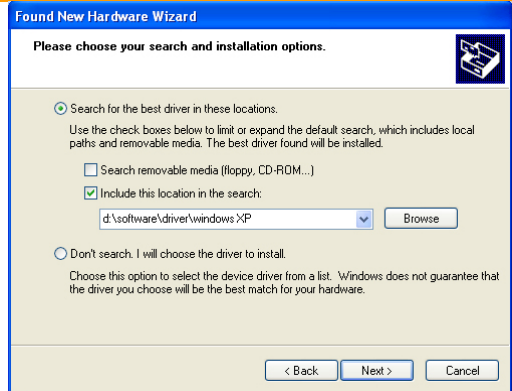
When you see a Windows Logo error appear, click **Continue Anyway** to continue installation.



Step 7

For a Windows XP installation, tick the option button next to **Include this location in the search**. Then click on the **Browse** button to select the Windows XP drivers.

Click on the **Next** button to proceed.



Step 8

The prompt screen appears to inform you that the installation is successful. Click **Finish** to complete the installation. Once the installation is successfully completed, the **Wireless Configuration Utility Country Selector** screen appears.



Step 9

Select the country where you are using this wireless network adapter. Next select the correct regulatory domain and channel to ensure that the channel set configuration is compliant with the regulatory standards of the country you have selected.

Step 10

After the network adapter has been installed, you will see the Wireless Configuration Utility icon appears in the taskbar of your monitor.



Wireless
Configuration
Utility icon in
green

Please note the icon's colour such that if the icon shows green in colour, the network adapter is properly connected to the network.



Wireless
Configuration
Utility icon in
red

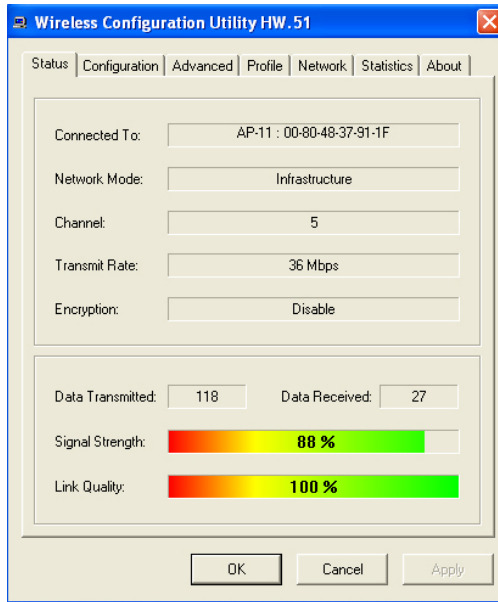
When the icon shows red in colour, the network adapter is disconnected from the network.

3: Configuring Wireless Settings

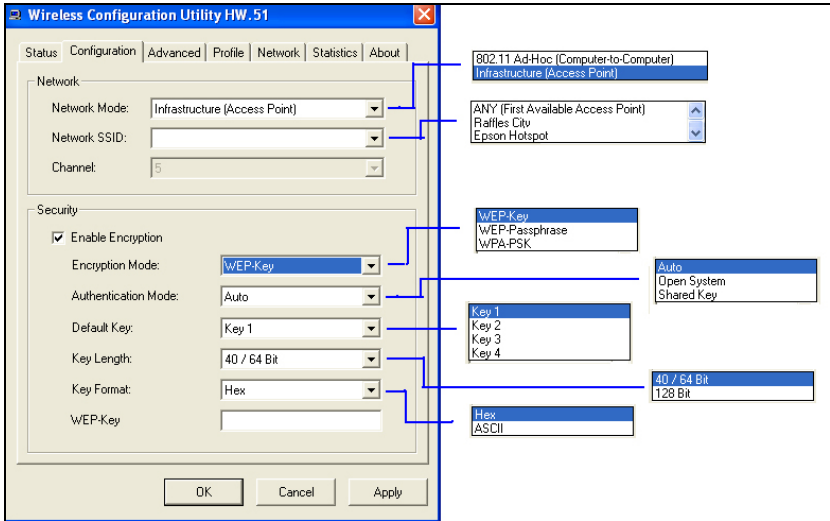
After the installation is finished, and your network adapter has been plugged in to your computer, double-click this icon that appears in the task bar.

After that, the Utility reveals seven tabs: Configuration, Advanced, Profile, Network, Statistics and About.

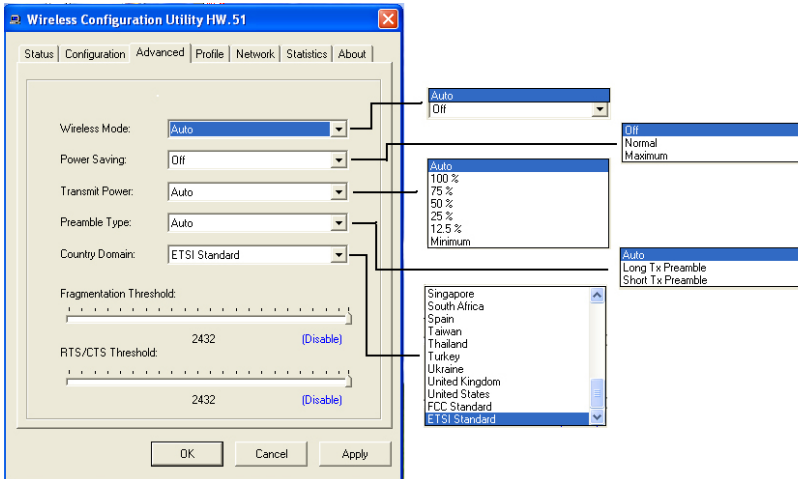
Status: This screen shows you the status of your card. It shows you where the device is connected to, and other information on the network mode, the Channel, the transmit rate and the encryption mode.



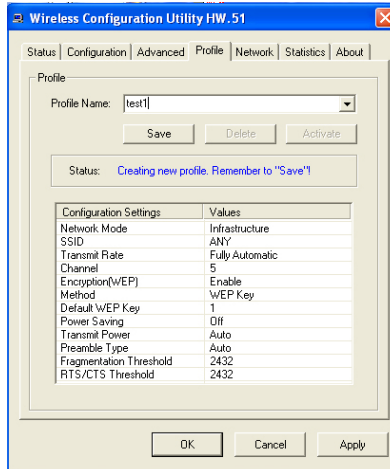
Configuration: This screen allows you to configure the parameters to meet your requirement of setting up a Infrastructure or Ad-Hoc wireless network.



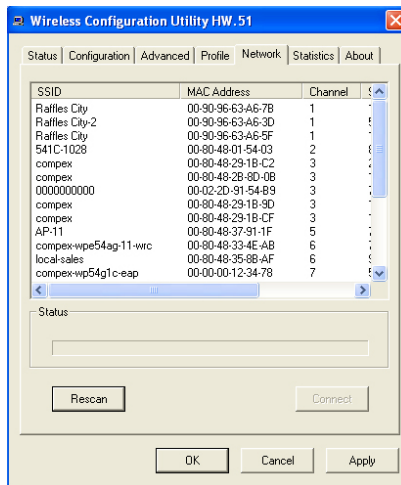
Advanced: This screen help you control and adjust your network adapter to wireless devices which require further configuration.



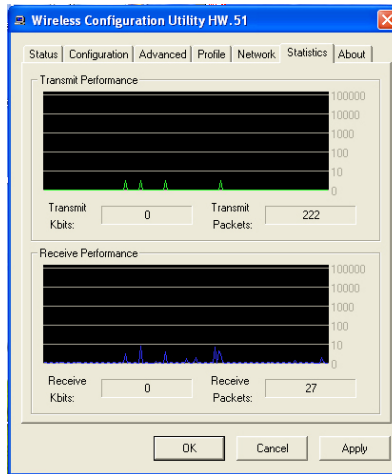
Profile: This screen allows you to create a new profile, edit and delete an existing profile. It also helps you set values for all parameters by selecting a previously defined profile.



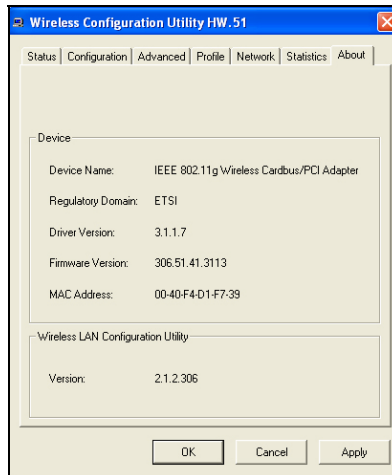
Network: This screen shows all the wireless devices around your network adapter. The information of the wireless devices includes the SSID, MAC Address, Channels, Signal, the WEP type and the Network mode. The **Rescan** button is used to help you to search for existing access point in your area.



Statistics: This screen shows the real-time transmit and receive packets of the Wireless LAN.



About: This screen shows the Device Name, Regulatory Domain, Driver Version, Firmware Version, MAC Address and the Utility version of the wireless LAN.



For details in using the Utility, refer to the User's Manual stored in the Product CD.

Further Information References

For more details on the WL54G configuration, please refer to the User's Manual in the accompanying Product CD.

This document may become superseded, in which case you may find its latest version at: <http://www.complex.com.sg>

Disclaimer: **Compex, Inc.** provides this guide without warranty of any kind, either expressed or implied, including but not limited to the implied warranties of merchantability and fitness for a particular purpose. Compex, Inc. may make improvements and/or changes to the product and/or specifications of the product described in this guide, without prior notice. Compex, Inc will not be liable for any technical inaccuracies or typographical errors found in this guide. Changes are periodically made to the information contained herein and will be incorporated into later versions of the guide. The information contained is subject to change without prior notice.

Trademark Information: **Compex**[®], **ReadyLINK**[®] and **MicroHub**[®] are registered trademarks of **Compex, Inc.** **Microsoft Windows** and the **Windows logo** are the trademarks of **Microsoft Corp.** **NetWare** is the registered trademark of **Novell Inc.** All other brand and product names are trademarks or registered trademarks of their respective owners.

Notice: Copyrights © 2006 by Compex, Inc. All rights reserved. Reproduction, adaptation, or translation without prior permission of Compex, Inc. is prohibited, except as allowed under the copyright laws.

Manual Revision by Daniel

Manual Number: M-0526-V1.2C Version 1.2, August 2006

FCC NOTICE: This device has been tested and found to comply with the limits for a **Class B** digital device, pursuant to **Part 15 of the FCC Rules**. These limits are designed to provide reasonable protection against harmful interference in a residential installation. This device generates, uses and can radiate radio frequency energy and, if not installed and used in accordance with the instructions, may cause harmful interference to radio communications. However, there is no guarantee that interference will not occur in a particular installation. If this device does cause harmful interference to radio or television reception, the user is encouraged to try to correct the interference by one or more of the following measures:

- ♦ Reorient or relocate the receiving antenna.
- ♦ Increase the separation between the computer and receiver.
- ♦ Connect the computer into an outlet on a circuit different from that to which the receiver is connected.
- ♦ Consult the dealer or an experienced radio / TV technician for help.

Caution: Any changes or modifications not expressly approved by the grantee of this device could void the user's authority to operate the equipment.

FCC Compliance Statement: This device complies with Part 15 of the FCC Rules. Operation is subject to the following two conditions:

- (1) This device may not cause harmful interference, and
- (2) This device must accept any interference received, including interference that may cause undesired operation.

Products that contain a radio transmitter are labeled with FCC ID and may also carry the FCC logo.

Caution: Exposure to Radio Frequency Radiation.

To comply with the FCC RF exposure compliance requirements, the following antenna installation and device operating configurations must be satisfied:

- a. For configurations using the integral antenna, the separation distance between the antenna(s) and any person's body (including hands, wrists, feet and ankles) must be at least 2.5cm (1 inch).
- b. For configurations using an approved external antenna, the separation distance between the antenna and any person's body (including hands, wrists, feet and ankles) must be at least 20cm (8 inch).

The transmitter shall not be collocated with other transmitters or antennas.

ICES 003 Statement

This Class B digital apparatus complies with Canadian ICES-003.

DECLARATION OF CONFORMITY: *Compex, Inc. declares that the product:*

Product Name: Compex 54Mbps Wireless LAN PCMCIA Card

Model No.: WL54G conforms to the following Product Standards:

This device complies with the Electromagnetic Compatibility Directive (89/336/EEC) issued by the Commission of the European Community. Compliance with this directive implies conformity to the following European Norms (in brackets are the equivalent international standards.)

Electromagnetic Interference (Conduction and Radiation): EN 55022 (CISPR 22)

Electromagnetic Immunity: EN 55024 (IEC61000-4-2,3,4,5,6,8,11)

Low Voltage Directive: EN 60 950: 1992+A1: 1993+A2: 1993+A3: 1995+A4: 1996+A11:1997.

Therefore, this product is in conformity with the following regional standards: FCC Class B: following the provisions of FCC Part 15 directive; **CE Mark:** following the provisions of the EC directive.

DECLARATION OF CONFORMITY: *Compex, Inc. declares that:*

The wireless card in this product complies with the R&TTE Directive (1999/5/EC) issued by the Commission of the European Community. Compliance with this directive implies conformity to the following:

EMC Standards: FCC: 47 CFR Part 15, Subpart B, 47 CFR Part 15, Subpart C (Section 15.247); CE: EN 300 328-2, EN 300 826 (EN 301 489-17)

Therefore, this product is in conformity with the following regional standards: FCC Class B: following the provisions of FCC Part 15 directive; **CE Mark:** following the provisions of the EC directive.

Manufacturer's Name: Compex, Inc.

Address: 840 Columbia Street, Suite B

Brea, CA 92821, USA

WARRANTY REGISTRATION CARD

[M-0088-V2.4C]

Register via the Internet at <http://www.cpx.com>
or <http://www.compex.com.sg>



To activate the warranty, please complete this card and return to Compex within ninety (90) days from the date of purchase.

Please e-mail this warranty card to support@compex.com.sg.

Product:	Purchase Date:	Model:	Serial No:
Name:		E-mail:	
Company:			
Address:			
Postal/Zip Code:		Country:	
Phone: ()			

Note:

For purchases within U.S.A and Canada, please fax to Compex, Inc. at (714) 482 0332

For purchases outside U.S.A and Canada, please fax to Compex Systems Pte Ltd at (65) 6280-9947

Manual Number:
M-0526-V1.2C
Version 1.2
August 2006

