

®

ReadyLINK

Quick Install Guide

**Complex
24-Port 10/100 + 1
Modular Exp Slot
Web-Managed
Switch**

SXP2224WM (RoHS-compliant)

Version 1.2



networks@work



This page is intentionally left blank



Contents

1. Introduction	1
2. Packaging Content.....	2
3. Panel Views.....	2
4. Panel Features.....	4
5. Specifications	5
6. Hardware Installation	7
6.1. Desktop installation.....	7
6.2. Rack installation.....	8
6.3. Installation of Expansion Module	9
6.4. Removal of Expansion Module.....	10
7. Configuration of CompeX SXP2224WM through Hyper Terminal	10
8. Configuration of CompeX SXP2224WM using Web-based Interface	12
8.1. Login to Web Browser Interface	12
9. Troubleshooting.....	16
9.1. Diagnosing LED Indications	16
9.2. Incorrect connections	17
9.3. Cabling.....	18
Technical Support for English Version	TS-1
Warranty Card for English Version.....	I



This page is intentionally left blank

Quick Install Guide

Compex 24-Port 10/100 + 1 Modular Exp Slot Web-Managed Switch SXP2224WM

1. Introduction



Figure 1.1 Compex SXP2224WM

The Compex SXP2224WM is a 24-ports 10/100 Mbps + 1 modular slot web-managed switch that offers fiber or copper-based gigabit connectivity through its expansion module. The SXP2224WM comes with enhanced features that can be catered for today's most demanding Ethernet-based switching applications. It is the most ideal workgroup switch for any small and medium enterprises.

2. Packaging Content

- ◆ 1 x CompeX SXP2224WM unit
- ◆ 1 x power cord
- ◆ 1 x RS232 console straight cable
- ◆ 2 x brackets with 8 screws
- ◆ 1 x Quick Install Guide with Warranty card
- ◆ 1 x Product CD ROM

3. Panel Views



Figure 3.1 Front Panel View of CompeX SXP2224WM

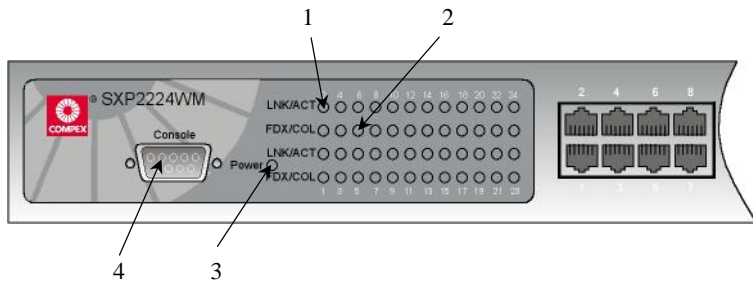


Figure 3.2 Front Panel View of CompeX SXP2224WM (Section #1)

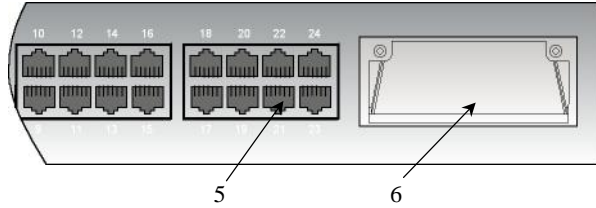


Figure 3.3 Front Panel View of Complex SXP2224WM (Section #2)



Figure 3.4 Back Panel View of Complex SXP2224WM

4. Panel Features

	Features	Status and Indication	
1	LNK/ACT LEDs	Steady Green	The port is connected to the switch.
		Blinking Green	The port is transmitting or receiving data.
		Off	There is no connection established in the network.
2	FDX/COL LEDs	Steady Amber	The port is operating in Full Duplex mode.
		Off	The port is operating in Half Duplex mode.
		Blinking Amber	Collision occurs in the network segment of the respective port.
3	Power LED	Steady Green	Power is supplied to the switch.
		Off	No power is supplied to the switch.
4	Console Port	A serial 9 Pin (DB9) RS232 straight socket is connected to PC COM Port for monitoring the switch.	
5	24 RJ45 Management Ports	Connect to web-browser via RJ45 UTP/STP network cable <ul style="list-style-type: none"> • 10Base-T • 100Base-TX • Auto-negotiation 	
6	Open Expansion Module Slot	Types of Optional Module used: <ul style="list-style-type: none"> • SXM1000T/2: 2 Gigabit Copper Module • SXM1000T/MGBIC: 1 Gigabit Copper + 1 GBIC (3.3V) slot 	
7	Power Socket	Flexible power input (range 100VAC ~ 240VAC, 50~60Hz)	

5. Specifications

•	Industry Standards	Complies with <ul style="list-style-type: none"> • IEEE 802.3 10Base-T • IEEE 802.3u 100Base-TX • IEEE 802.3ab 1000Base-T • IEEE 802.1p Priority Queuing • IEEE 802.3z 1000Base-SX
•	Safety Certifications	<ul style="list-style-type: none"> • CE Mark • FCC Part 15 Class A • Gost • C-Tick • UL
•	Interface	<ul style="list-style-type: none"> • 24-Port auto-negotiating • 10Base-T • 100Base-TX
•	Protocol	CSMA/CD
•	Speed	<ul style="list-style-type: none"> • 10Mbps • 100Mbps
•	LED Indicators	<ul style="list-style-type: none"> • LNK/ACT • FDX/COL • Power
•	Optional modules	<ul style="list-style-type: none"> • SXM1000T/2: 2 Gigabit Copper Module • SXM1000T/MGBIC: 1 Gigabit Copper + 1 GBIC (3.3V) slot
•	Switching Method	Store and Forward

•	Management	<ul style="list-style-type: none"> • Console Interface • Web-based Management Interface
•	Transfer Rate	<ul style="list-style-type: none"> • 14,880pps Ethernet port • 148,800pps Fast Ethernet port • 1488,000pps Gigabit port
•	Transmission Mode	<ul style="list-style-type: none"> • Full Duplex • Half Duplex
•	MAC Address Table	6K
•	Packet Buffer	3Mbits
•	Virtual LAN	Port-based VLAN with VLAN ID up to 255
•	Port Trunking	Provide 7 Trunk groups of a maximum of 4 member ports (minimum 2 member ports) within 24 ports.
•	Port Mirroring	Global System support 3 mirroring type RX, TX and both packet. The maximum of mirror entries up to 25.
•	Priority Queuing	Supports 8 priority levels ID for high/low priority queuee.
•	Physical Dimension	440mm x 161mm x 44mm (L x B x H)
•	Environmental Requirements	<p>Operating temperature: 0°C to 45°C Storage temperature: -20°C to 70°C Operating humidity: 10% to 90% RH Storage humidity: 5% to 90% RH RH = Relative Humidity</p>

6. Hardware Installation

Compex SXP2224WM is suitable for corporate network installation. Compex SXP2224WM can either be placed on a flat surface or mounted on a 19-inch rack. The following steps illustrate the proper installation.

6.1. Desktop installation

1. Unpack Compex SXP2224WM.
2. Place it near to a power outlet. Ensure that there is sufficient space for heat ventilation.
3. The surface to place Compex SXP2224WM should be clean, smooth, level and sturdy.
4. Ensure there is enough spacing around the unit to allow attachment of network cables.
5. Attach the rubber foot at the bottom of the metal chassis.
6. Insert the power cord into the socket located at the back of Compex SXP2224WM.
7. Use a RJ45 network cable and insert to any of the port and power on the switch.
8. Check that the **Power** LED at the front panel of Compex SXP2224WM has lighted up.
9. The unit is now ready to use.

6.2. Rack installation

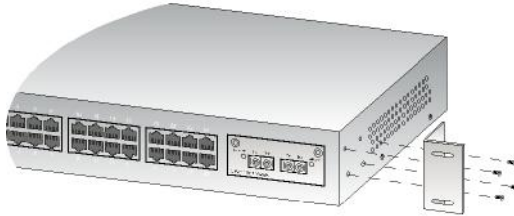


Figure 6.1 Secure brackets onto CompeX SXP2224WM

1. Position one bracket to align with the holes on one side of CompeX SXP2224WM and secure it with the smaller bracket screws (3mm diameter) as shown in Figure 6.1. Then attach the other bracket to another side of it.

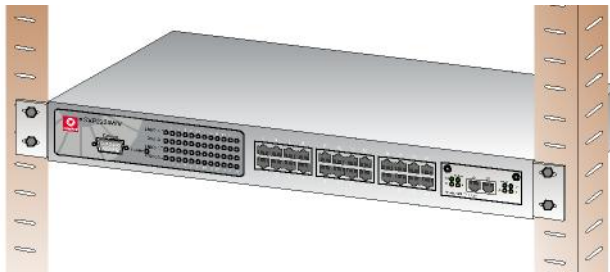


Figure 6.2 CompeX SXP2224WM on rack

2. After attaching both mounting brackets, position the device in the rack by lining up the holes in the brackets with the appropriate holes on the rack. Secure it to the rack using the rack-mounting screws (8mm diameters) with a screwdriver.
3. Insert the power cord to the socket located at the back of CompeX SXP2224WM.
4. Use a RJ45 network cable and insert to any of the port and power on the switch.

5. Check that the **Power** LED at the front panel of Compex SXP2224WM has lighted up.
6. The unit is now ready to use.



NOTE

Please allow at least 10 cm of clearance on the front and back of the switch for proper ventilation. This is especially important for enclosed rack installation.

6.3. Installation of Expansion Module

A series of optional expansion modules are available for Compex SXP2224WM. You need to install the modules before turning on Compex SXP2224WM. Please refer to “**Specifications**” for the types of optional modules to be used.

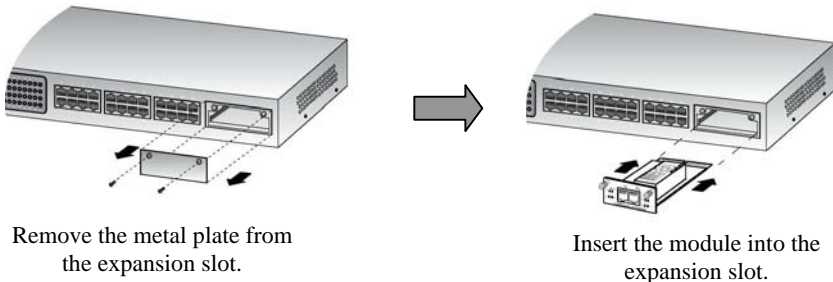


Figure 6.3 Installing expansion module

1. Power off Compex SXP2224WM.
2. Unscrew and remove the metal plate from the expansion slot.
3. Insert the module carefully into the expansion module window and push it along the rail until it is firmly inserted into the connector of the PCB board of Compex SXP2224WM.

4. Tighten the screws on the module.

6.4. Removal of Expansion Module

1. Power off CompeX SXP2224WM and remove any cable connecting to the module.
2. Loosen the captive screws which are used to secure the module and slide the module out completely from the window.
3. Cover the empty expansion module window with the metal plate and tighten it up with the screws provided.

7. Configuration of CompeX SXP2224WM through Hyper Terminal

We can configure CompeX SXP2224WM through Hyper Terminal by connecting one end of RS232 crossover console cable to a PC, and the other end to CompeX SXP2224WM. You need to set your configuration as:

Bits per seconds: 9600

Data Bits: 8

Parity: none

Stop bits: 1

Flow Control: none

The authentication page will appear and prompt you to enter your password. The default Username and Password is “admin”.



Figure 7.1 Authentication Page in Hyper Terminal screen

The main page will appear as shown. From here, you can configure Complex SXP2224WM easily.

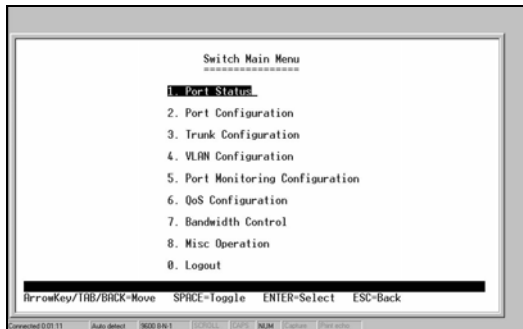


Figure 7.2 Main Page in Hyper Terminal



8. Configuration of CompeX SXP2224WM using Web-based Interface

An Internet browser would be used to configure CompeX SXP2224WM. The most commonly used browsers are Netscape Navigator, Netscape Communicator and Microsoft Internet Explorer as they support frames and Java. We recommend you to use the Netscape Communicator V4.06 or higher, or Microsoft Internet Explorer 4.0 or higher.

Start by running your browser on a workstation connected to CompeX SXP2224WM. Enter URL Address, <http://192.168.100.128>.

8.1. **Login to Web Browser Interface**

The following is a list of ways for different browsers to access the web-based management interface. Follow the instructions of the browser that you will be using.

For Netscape Navigator

1. Select the **File** menu and click on **Open Location**.
2. In the **Open Location** dialog box, enter the IP address <http://192.168.100.128>. The switch default management IP address is set to 192.168.100.128.
3. Click on the “Open” button.

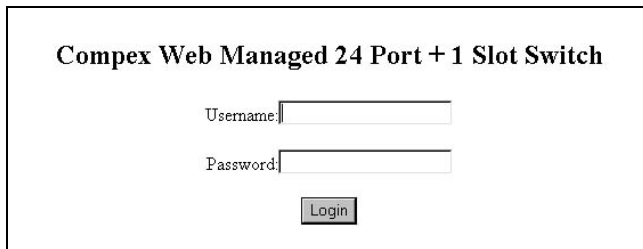
For Netscape Communicator

1. Select the **File** menu, and then press **Open Page**.
2. In the **Open Location** dialog box, enter the IP address <http://192.168.100.128>. The switch default management IP address is set to 192.168.100.128.
3. Ensure that the Navigator radio button is selected. Click on the “Open” button.

For Microsoft Internet Explorer

1. Select the **File** menu, then select **Open**.
2. In the **Open Location** dialog box, enter the IP address `http://192.168.100.128`. The switch default management IP address is set to 192.168.100.128.
3. Click on the “OK” button.

The authentication page will appear and prompt you to enter your password. The default Username and Password is “*admin*”. If you wish to set a password, please refer to “**Changing Password**” section of the User’s Manual. Click “Login” button to access to the web interface.



Complex Web Managed 24 Port + 1 Slot Switch

Username:

Password:

Figure 8.1 Authentication Page

After logging to the Management System, the Main Page of Compex SXP2224WM will appear as shown in Figure 8.2.

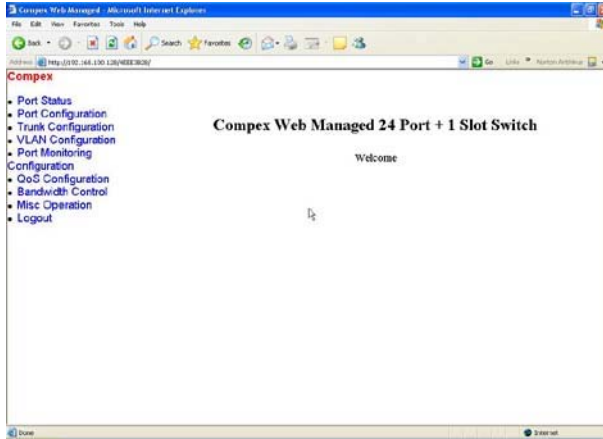


Figure 8.2 Main Page of Compex SXP2224WM

The overall descriptions for individual sub-functions are listed as shown:

Menu	Description	Reference in User's Manual
Port Status	View every port's status that depends on the user setting and the negotiation result.	Section 6.1
Port Configuration	Change each port's parameters.	Section 6.2
Trunk Configuration	Configure trunk group.	Section 6.3
VLAN Configuration	Create, modify, delete or configure VLAN group/s.	Section 6.4
Port Monitoring Configuration	Keep track of the traffic of switched network.	Section 6.5
QoS Configuration	Configure port priority level to high or low queue.	Section 6.6
Bandwidth Control	Configure the bandwidth rate for individual port in and port out.	Section 6.7
Misc Operation	Change password, set advanced configuration, restore to the system default setting, reboot system, display system information and configure IP address.	Chapter 7
Logout	Exit from the web interface.	Section 7.8

9. Troubleshooting

9.1. Diagnosing LED Indications

Compex 24-port 10/100 + 1 Modular Exp Slot Web-Managed Switch is designed with LED indicators to indicate the operating status such as: Power Supply, Port Activity Status (Transmit/and Receive), Duplex status and 10/100Mbps connection Status. By looking at the LEDs, we may be able to identify which portion of Compex SXP2224WM is faulty so that we can rectify it.

LED indicators	Description of Function
Power LED	<p>If the LED does not light up when power supply is inserted, check that:</p> <ul style="list-style-type: none"> • Plug/cord is properly inserted into the socket. • Main switch on the power point is ON. <p>If the switch powers off after running for a while, check for loose power connections, power losses or surges at power outlet.</p> <p>If you still cannot resolve the problem, contact your local dealer for assistance.</p>
LNK/ACT LEDs	<p>When the LED does not light up, check that:</p> <ul style="list-style-type: none"> • Wire pair connections at RJ-45 plug are correct. Ensure that MDIX cross over cable is used if connected directly to PC. • RJ-45 plug is fully inserted until you hear a click sound. • The PC is powered-up. <p>If the LED is not blinking when there is network activity on the network segment, please replace the switch.</p>
FDX/COL LEDs	<p>If the LED does not light up steadily when the particular port is running at Full Duplex mode, check that</p> <ul style="list-style-type: none"> • The device is configured to Full Duplex mode. <p>Please note that if the LED is not blinking while two or more stations are running in Full Duplex Mode, replace the switch.</p>

9.2. Incorrect connections

CompeX SXP2224WM can automatically detect straight or cross-over RJ45 network cable when you establish a connection with other Ethernet device.

For RJ45 connector, you should use the correct STP or UTP cable:

- 10/100Mbps port use 2 pairs twisted cable
- Gigabit 1000T port use 4 pairs twisted cable

Please use the appropriate types of fiber module if you want to establish a fiber connection. Refer to “**Technical Specification**” section on page 5 for details.

Non-standard network cables

Non standard and miss-wired cables may cause numerous network collisions and other network problem. This might lead to serious impair network performance. A category 5 cable tester is recommended tool for every 100Base-T network installation.

Improper Network Technologies

It is important to ensure that you have a valid network topology. Common topology faults include excessive cable length and too many repeaters/hubs between end nodes. In addition, you should ensure that your network topology contains no data path loops between any two ends nodes, there should be only one active cabling path at any time. Data path loops will cause broadcast storms that will severely impact your network performance.

9.3. Cabling

For RJ45 Ethernet network cable,

Use Unshielded Twisted Pair (UTP) or Shield Twisted Pair (STP) cable for RJ45 connections.

- 100 Ω Category 3, 4 or 5 cable for 10Mbps connections or
- 100 Ω Category 5 cable for 100Mbps connections.

Also ensure that the length of any twisted-pair connection does not exceed 100 meters. Gigabit port should use Category 5 or Category 5e cable for 1000Mbps connections. The length does not exceed 100 meters.



Disclaimer: **Compex, Inc.** provides this guide without warranty of any kind, either expressed or implied, including but not limited to the implied warranties of merchantability and fitness for a particular purpose. **Compex, Inc.** may make improvements and/or changes to the product and/or specifications of the product described in this guide, without prior notice. **Compex, Inc.** will not be liable for any technical inaccuracies or typographical errors found in this guide. Changes are periodically made to the information contained herein and will be incorporated into later versions of the guide. The information contained is subject to change without prior notice.

Trademark Information: **Compex**[®], **ReadyLINK**[®] and **MicroHub**[®] are registered trademarks of **Compex, Inc.** **Microsoft Windows** and the **Windows logo** are the trademarks of **Microsoft Corp.** **NetWare** is the registered trademark of **Novell Inc.** All other brand and product names are trademarks or registered trademarks of their respective owners.

Notice: Copyright © 2005 by **Compex, Inc.** All rights reserved. Reproduction, adaptation, or translation without prior permission of **Compex, Inc.** is prohibited, except as allowed under the copyright laws.

Manual Revision by Ong

Manual Number: **M-0374-V1.2C** Version 1.2, February 2005

FCC NOTICE: This device has been tested and found to comply with the limits for a **Class A** digital device, pursuant to **Part 15 of the FCC Rules**. These limits are designed to provide reasonable protection against harmful interference in a residential installation. This device generates, uses and can radiate radio frequency energy and, if not installed and used in accordance with the instructions, may cause harmful interference to radio communications. However, there is no guarantee that interference will not occur in a particular installation. If this device does cause harmful interference to radio or television reception, the user is encouraged to try to correct the interference by one or more of the following measures:

- Reorient or relocate the receiving antenna.
- Increase the separation between the computer and receiver.
- Connect the computer into an outlet on a circuit different from that to which the receiver is connected.
- Consult the dealer or an experienced radio/TV technician for help.

Caution: Any changes or modifications not expressly approved by the grantee of this device could void the user's authority to operate the equipment.

FCC Compliance Statement: This device complies with Part 15 of the FCC Rules. Operation is subject to the following two conditions:

- (1) This device may not cause harmful interference, and
- (2) This device must accept any interference received, including interference that may cause undesired operation.

ICES 003 Statement

This Class A digital apparatus complies with Canadian ICES-003

DECLARATION OF CONFORMITY: *Compex, Inc. declares that the product:*

Product Name: Compex 24-Port 10/100 + 1 Modular Exp. Slot Web Managed Switch

Model No.: SXP2224WM *conforms to the following Product Standards:*

Radiated Emission Standards: EN55022A, FCC Part 15 Class A

Conducted Emission Standards: EN60555Pt2 conducted emission; EN55022A conducted emission, LVD 60950 standard, FCC Part 15 Class A

Immunity Standards: IEC 801-2; IEC 801-3; IEC 801-4

Low Voltage Directive: EN 60 950:1992+A1: 1993+A2: 1993+A3; 1995+A4; 1996+A11: 1997.

Therefore, this product is in conformity with the following regional standards: FCC Class A — following the provisions of FCC Part 15 directive; **CE Mark** — following the provisions of the EC directive.

Manufacturer's Name: Compex, Inc.
Address: 840 Columbia Street, Suite B,
Brea, CA92821, USA

European Contact & Technical Support
ReadyLINK Netzwerktechnologie GmbH,
Albert Einstein Straße 34/M21,
63322 Rödermark, Germany
Fax: ++49 (60) 749-0668



Technical Support Centers

Contact the technical support center that services your location.

U.S.A., Canada, Latin America and South America

Write	Compex, Inc. 840 Columbia Street, Suite B, Brea, CA92821, USA
Call	Tel: +1 (714) 482-0333 (8 a.m.-5 p.m. Pacific time)
Fax	Tel: +1 (800) 279-8891 (Ext.122 Technical Support) Fax: +1 (714) 482-0332

Europe

Write	ReadyLINK Netzwerktechnology GmbH Albert Einstein Straße 34/M21 63322 Rödermark, Germany
Call	Tel: +49 (0) 6074 - 98017 (8 a.m.-5 p.m. local time)
Fax	Fax: +49 (0) 6074 - 90668 Email: readylink@compex.com.sg

Asia, Australia, New Zealand, Middle East and the rest of the World

Write	Compex Systems Pte Ltd 135, Joo Seng Road #08-01, PM Industrial Building Singapore 368363
Call	Tel: (65) 6286-1805 (8 a.m.-5 p.m. local time)
Fax	Tel: (65) 6286-2086 (Ext.199 Technical Support) Fax: (65) 6283-8337
Internet access/	E-mail: support@compex.com.sg FTPsite: ftp.compex.com.sg
Website:	http://www.cpx.com or http://www.compex.com.sg

Manual Number:
M-0374-V1.2C

Version 1.2
February 2005



networks@work