

## Quick Install Guide

### Compex USB to 10/100Mbps Ethernet Adapter

#### UE202-B

Version 1.2



## 1. INTRODUCTION



Actual Size

Figure 1 UE202-B

Compex UE202-B offers the most convenient and cost-effective means of instantly connecting you to any IEEE 802.3 Ethernet or IEEE 802.3u Fast Ethernet network. It is a thumb-sized USB to 10/100Mbps Ethernet adapter that offers an “out-of-the box” network connection. With its “plug and play” features, and a simple “point and click” software installation, you can have network connectivity for the desktop, notebook and Laptop without the need to open up the computer’s casing or the usual hassle of hardware installation and compatibility concerns.

## 2. FEATURES

- Conforming to IEEE 802.3 & 802.3u Ethernet & Fast Ethernet specifications, the UE202-B is compatible with most 10/100Mbps Ethernet connection, thus providing fast and reliable data transfer over the network through your computer’s USB port.
- The UE202-B has a USB Type-A connector on one side and a RJ-45 Ethernet connector on the other side. It allows the connection of 10BASE-T or 100BASE-TX LAN using your computer’s USB interface.
- Derives power from the host bus – external power supply not required.

## 3. PACKAGE CONTENTS

- 1 UE202-B Adapter
- 1 Cable Extender
- 1 Quick Install Guide
- 1 Driver Diskette



Manual Number:  
M-0333-V1.2C  
Version 1.2  
March 2002

#### 4. WINDOWS 98/ME DRIVER INSTALLATION

1. Connect UE202-B to the USB interface of your computer.

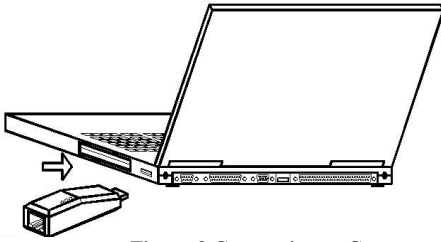


Figure 2 Connection to Computer

2. Power on the computer.



Figure 3 New Hardware Wizard (1 of 5)

3. The **Add New Hardware Wizard** as shown in Figure 3 will be activated



Figure 4 New Hardware Wizard (2 of 5)

4. Select “**Search for the best driver for your device (Recommended)**” as shown in Figure 4 and click **Next**.



Figure 5 New Hardware Wizard (3 of 5)

5. Insert the driver diskette into your floppy disk drive and select **Floppy disk Drives** (as shown in Figure 5) and click **Next**.



Figure 6 New Hardware Wizard (4 of 5)

6. The device driver will be installed.



Figure 7 New Hardware Wizard (5 of 5)

7. Click **Finish** upon completion of the installation.
8. Please **reboot** the system so that the new settings will be updated.

#### 5. WINDOWS 2000/XP DRIVER INSTALLATION

1. Connect UE202-B to the USB interface of your computer.

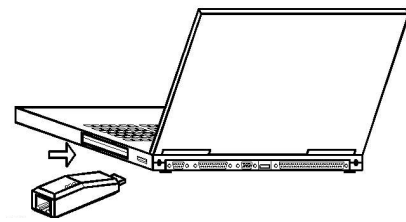


Figure 8 Connection to computer

2. Power on the computer.



Figure 9 New Hardware Wizard (1 of 3)

3. The **Add New Hardware Wizard** as shown in Figure 9 will be activated.



Figure 10 New Hardware Wizard (2 of 3)

4. Insert the driver diskette into your floppy disk drive and click **Continue Anyway** to proceed.

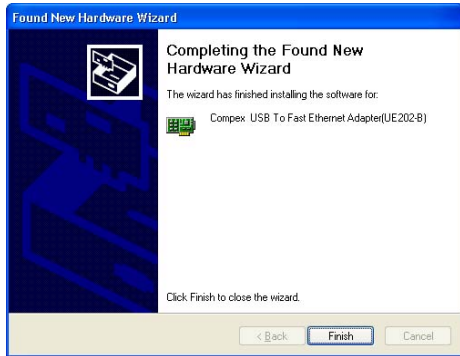


Figure 11 New Hardware Wizard (3 of 3)

5. The device driver will be installed and click **Finish** upon completion of the installation.

## 6. TCP/IP CONFIGURATON

1. Select **Setting** from the **Start Menu** and click on **Control Panel**.
2. *a. For Windows 98/ME users, please*  
Double click on the **Network** icon.
- b. For Windows 2000/XP users, please*  
Double click on the **Network & Dialup Connections** icon.
3. Select the TCP/IP configuration of **Complex USB to Fast Ethernet Adapter (UE202-B)** and click **Properties**.

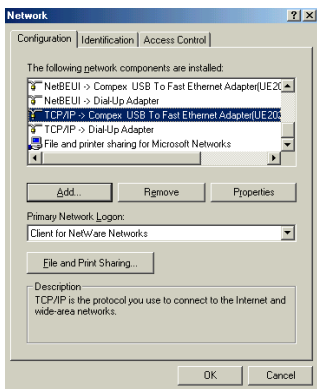


Figure 12 Network configuration for Windows 98/ME

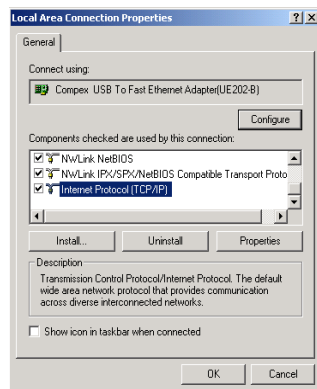


Figure 13 Network configuration for Windows 2000/XP

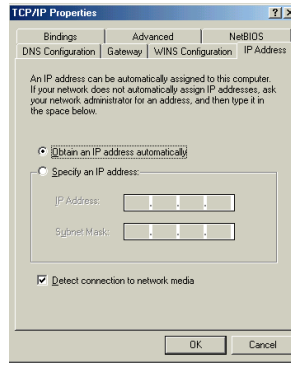


Figure 14 TCP/IP configuration for Windows 98/ME

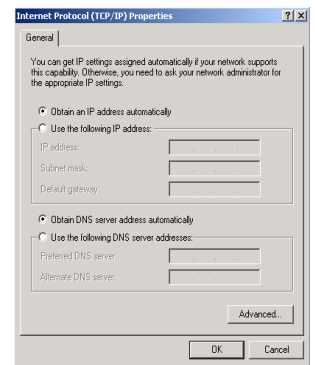


Figure 15 TCP/IP configuration for Windows XP/2000

4. Configure your IP address, subnet mask, gateway IP address as well as the DNS server.

### Note:

Please contact your network administrator for further clarification on network configuration.

For Windows 98/ME users, **rebooting** the system is necessary so that the new settings will be updated.

## 7. CONNECTION WITH CABLE EXTENDER

You may need the cable extender to connect UE202-B with your Workstation if the space is limited (refer to Figure 16).

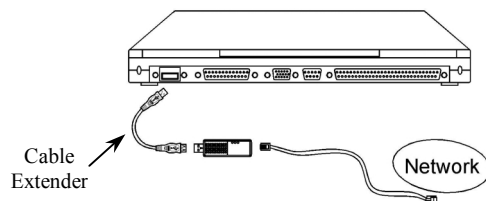


Figure 16 Connection with Cable Extender

One end of the cable extender is male (Side A, see Figure 17); the other end is female (Side B, see Figure 17).

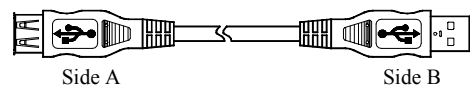


Figure 17 UE202-B Cable Extender

1. Prepare an MDI (straight-connect) twisted-pair cable, maximum Length 100 meters (328 feet). Use Category 3, 4 or 5 cable for connection to 10Mbps Ethernet, or Category 5 cable for connection to 100Mbps Fast Ethernet.
2. Connect one end of the cable to the RJ-45 port of the UE202-B adapter, and other end to a free port on a network hub or switch.
3. Connect Side B of the cable extender to USB interface of your PC or mobile computer, and Side A to UE202-B.

## 8. TROUBLESHOOTING

If the "Add New Hardware Wizard" did not appear when you have UE202-B plugged into the USB interface, please

1. Select **Setting** from the **Start Menu**.
2. Click on **Control Panel**.
3. Double click on the **Add New Hardware icon**.

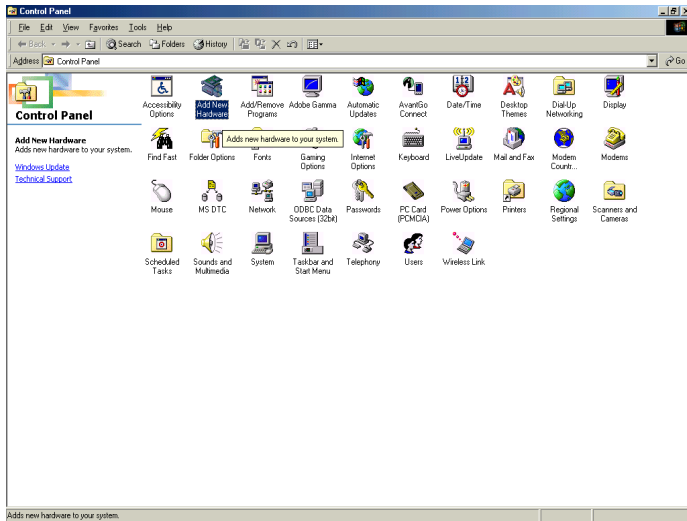


Figure 18 Control Panel

4. Proceed with the instructions as listed in the section 4 or section 5.

**Disclaimer:** Compex, Inc. provides this guide without warranty of any kind, either expressed or implied, including but not limited to the implied warranties of merchantability and fitness for a particular purpose. Compex, Inc. may make improvements and/or changes to the product and/or specifications of the product described in this guide, without prior notice. Compex, Inc. will not be liable for any technical inaccuracies or typographical errors found in this guide. Changes are periodically made to the information contained herein and will be incorporated into later versions of the guide. The information contained is subject to change without prior notice.

**Trademark Information:** Compex®, ReadyLINK® and MicroHub® are registered trademarks of Compex, Inc. Microsoft Windows and the Windows logo are the trademarks of Microsoft Corp. NetWare is the registered trademark of Novell Inc. All other brand and product names are trademarks or registered trademarks of their respective owners.

**Notice:** Copyright © 2002 by Compex, Inc. All rights reserved. Reproduction, adaptation, or translation without prior permission of Compex, Inc. is prohibited, except as allowed under the copyright laws.  
Manual Revision by He Hin  
Manual Number: *M-0333-V1.2C* Version 1.2, March 2002

**FCC NOTICE:** This device has been tested and found to comply with the limits for a Class A digital device, pursuant to Part 15 of the FCC Rules. These limits are designed to provide reasonable protection against harmful interference in a residential installation. This device generates, uses and can radiate radio frequency energy and, if not installed and used in accordance with the instructions, may cause harmful interference to radio communications. However, there is no guarantee that interference will not occur in a particular installation. If this device does cause harmful interference to radio or television reception, the user is encouraged to try to correct the interference by one or more of the following measures:

- Reorient or relocate the receiving antenna.
- Increase the separation between the computer and receiver.
- Connect the computer into an outlet on a circuit different from that to which the receiver is connected.
- Consult the dealer or an experienced radio/TV technician for help.

**Caution:** Any changes or modifications not expressly approved by the grantee of this device could void the user's authority to operate the equipment.

**FCC Compliance Statement:** This device complies with Part 15 of the FCC Rules. Operation is subject to the following two conditions:  
(1) This device may not cause harmful interference, and  
(2) This device must accept any interference received, including interference that may cause undesired operation.

**ICES 003 Statement**  
This Class A digital apparatus complies with Canadian ICES-003

**Gost NOTE:** This device (apparatus, equipment) complies with the radio interference limits established for Class A equipment in accordance with GOST R 51318.22-99 (CISPR 22-97) and shall not be used in dwelling houses, commercial and industrial districts with low electric power consumption and be connected to low-voltage distribution electric supply networks.


**DECLARATION OF CONFORMITY:** Compex, Inc. declares that the product:  
Product Name: *Compex USB to 10/100Mbps Ethernet Adapter LinkPort UE202-B* Model No.: *UE202-B* conforms to the following Product Standards: Radiated Emission Standards: EN55022A, FCC Part 15 Class A; Conducted Emission Standards: EN60555P2 conducted emission; EN55022A conducted emission, FCC Part 15 Class A; Immunity Standards: IEC 801-2; IEC 801-3; IEC 801-4; Low Voltage Directive: EN60950. Therefore, this product is in conformity with the following regional standards: FCC Class A — following the provisions of FCC Part 15 directive; CE Mark — following the provisions of the EC directive.

Manufacturer's Name: **Compex, Inc.**  
Address: 4051 E. La Palma, Unit A, Anaheim, CA 92807, USA  
26<sup>th</sup> March, 2002

**European Contact:**  
ReadyLINK Networktechnology GmbH,  
Technical Support  
Albert Einstein Straße 34/M21,  
63322 Rödermark, Germany  
[Fax: +49 (60) 749-0668]

**Shi Jia Xiang**  
R&D Manager

| <b>Technical Support Centers</b>  |   |
|---|---|
| Contact the technical support center that services your location.<br><b>U.S.A., Canada, Latin America and South America</b> |   |
| ✉ Write   | <b>Compex, Inc.</b><br>4051 E. La Palma, Unit A<br>Anaheim, CA 92807, USA                                 |
| ☎ Call  | Tel: +1 (714) 630-7302 (8 a.m.-5 p.m. Pacific time)<br>Tel: +1 (800) 279-8891 (Ext.122 Technical Support) |
| ☎ Fax   | Fax: +1 (714) 630-6521<br>BBS: +1 (714) 630-2570 (24-hour access)   |
| <b>Europe</b>   |   |
| ✉ Write   | <b>ReadyLINK Networktechnology GmbH</b><br>Albert Einstein Straße 34/M21<br>63322 Rödermark, Germany      |
| ☎ Call  | Tel: +49 (0) 6074 - 98017 (8 a.m.-5 p.m. local time)  |
| ☎ Fax   | Fax: +49 (0) 6074 - 90668<br>BBS: +49 (0) 6074 - 93974 (24-hour access)                                   |
| <b>Asia, Australia, New Zealand, Middle East and the rest of the World</b>  |   |
| ✉ Write   | <b>Compex Systems Pte Ltd</b><br>135, Joo Seng Road #08-01, PM Industrial Building<br>Singapore 368363    |
| ☎ Call  | Tel: (65) 6286-1805 (8 a.m.-5 p.m. local time)<br>Tel: (65) 6286-2086 (Ext.199 Technical Support)         |
| ☎ Fax   | Fax: (65) 6283-8337<br>BBS: (65) 6282-8854 (24-hour access)   |
| <b>Internet access/</b>   | E-mail: <b>support@compex.com.sg</b><br>FTPsite: <b>ftp.compex.com.sg</b>                                 |
| <b>Website:</b>   | <b>http://www.cpx.com or http://www.compex.com.sg</b>   |

| <b>WARRANTY REGISTRATION CARD</b>  |   | [M-0088-V2.3C]   | <br>networks@work |
|--|---|--|--|
| You can register via Internet at:  |   | <a href="http://www.cpx.com">http://www.cpx.com</a> or <a href="http://www.compex.com.sg">http://www.compex.com.sg</a> |  |
| Or E-mail: <b>support@compex.com.sg</b> with the following information:  |   |  |  |
| To activate the warranty, please complete this card and return to Compex within ninety (90) days of purchase date. |   |  |  |
| Product:   | Purchase Date:  | Revision:  | Serial No:   |
| Name:  | Title:  | E-mail:  |  |
| Company:   | Dept:   |  |  |
| Address:   |   | City:  |  |
| Postal/Zip Code:   | State:  | Country:   |  |
| Phone: ( )   | Extn:   | Fax: ( )   |  |
| Computer in which this product is installed?   | Model:  | Serial No:   |  |
| Network protocol (Check all that apply):   | <input type="checkbox"/> TCP/IP <input type="checkbox"/> IPX/ODI <input type="checkbox"/> XNS <input type="checkbox"/> OST <input type="checkbox"/> DLC <input type="checkbox"/> DECnet<br><input type="checkbox"/> NDIS <input type="checkbox"/> SNA <input type="checkbox"/> NBP <input type="checkbox"/> Other:  |  |  |
| Network Operating System (Check all that apply):   | <b>Novell NetWare:</b> <input type="checkbox"/> 3.X <input type="checkbox"/> 4.X <input type="checkbox"/> 5.X   SCO Unix: <input type="checkbox"/> Openserver Ver:<br><b>Microsoft Windows:</b> <input type="checkbox"/> NT4.0 <input type="checkbox"/> 95 <input type="checkbox"/> 98 <input type="checkbox"/> Win 2000<br><b>Linux:</b> <input type="checkbox"/> Red Hat Ver: _____ <input type="checkbox"/> SuSe Ver: _____ <input type="checkbox"/> Others: _____ Ver: _____<br><b>Others NOS:</b> _____ Ver: _____ |  |  |
| Applications used on network processing (Check all that apply):  | <input type="checkbox"/> Desktop Publishing <input type="checkbox"/> Word Processing <input type="checkbox"/> Accounting<br><input type="checkbox"/> CAD/CAM <input type="checkbox"/> Spreadsheet <input type="checkbox"/> Database Management<br><input type="checkbox"/> E-mail <input type="checkbox"/> Other:   |  |  |
| How did you learn about Compex?  | <input type="checkbox"/> Work <input type="checkbox"/> Friend <input type="checkbox"/> Internet <input type="checkbox"/> Dealer <input type="checkbox"/> Magazine <input type="checkbox"/> Exhibition<br><input type="checkbox"/> Other:  |  |  |

**Note:**  
For purchases within U.S.A and Canada, please fax to **Compex, Inc.** at (714) 630-6521  
For purchases outside U.S.A and Canada, please fax to **Compex Systems Pte Ltd** at (65) 6280-9947