



networks@work

Quick Install Guide

Wireless-G Multimedia Router

NetPassage 28G
(RoHS-compliant)

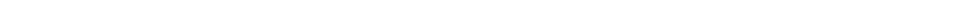


TABLE OF CONTENTS

CHAPTER 1: INTRODUCTION 1

CHAPTER 2: NETWORK INFRASTRUCTURE 2

CHAPTER 3: LET’S GET GOING-HARDWARE SETUP 3

POWER UP IN 4 STEPS: 3

CHAPTER 4: CONFIGURING WIRELESS NETWORK CONNECTION 4

CHAPTER 5: CONFIGURING TCP/IP SETTINGS..... 6

CHAPTER 6: GETTING STARTED WITH WIZARD SETUP 8

CHAPTER 7: PANEL VIEWS AND DESCRIPTIONS.....15

CHAPTER 8: TECHNICAL SPECIFICATIONS 18

WARRANTY REGISTRATION CARD 23

Chapter 1: Introduction



Thank you for purchasing the Compex NetPassage 28G Wireless-G Multimedia Gateway. The Multimedia Gateway with four USB2.0 ports is the latest innovation from Compex which allows USB devices connected to it to be shared with others. Typical devices include printers, webcams and hard drives. There are endless possibilities with what you can do using the Multimedia Gateway. Download songs and store them in the shared hard drive so others can

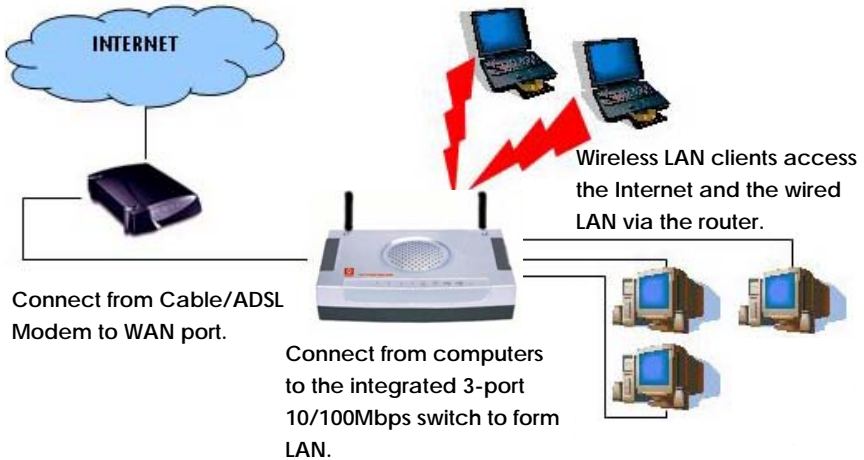
play them as well. Download photos and print them to the shared printer. Capture pictures with the webcam and store them on the shared hard drive.

Of course, it is also a full-fledged broadband Internet Gateway allowing you to share the broadband connection with several users in your home. The NetPassage 28G Multimedia Gateway is, additionally, equipped with advanced features that will make it suitable for the office as well.

Chapter 2: Network Infrastructure

Only a few simple steps are required to set up the router to begin your broadband Internet sharing as part of your wired and wireless network infrastructure.

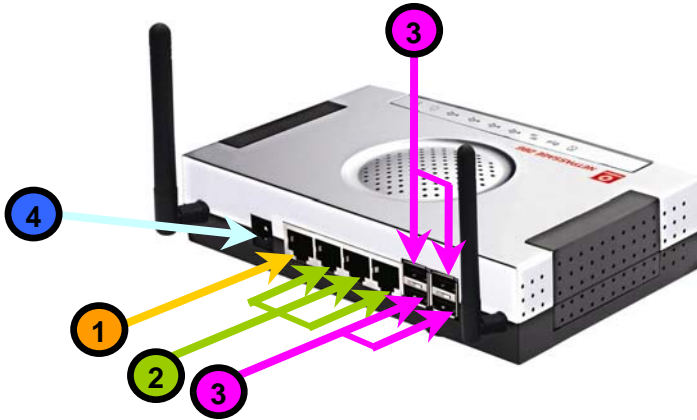
Example : BroadBand Internet Access Distribution to a Fast Ethernet Network & Wireless Network



Chapter 3: Let's Get Going-Hardware Setup

Power Up in 4 Steps:

In 4 simple steps, you shall have your router wired and functional. After which, you may proceed to the software configuration and get yourself ready to surf the Internet at high-speeds!



- 1 Connect the Ethernet cable from your Cable/ADSL modem on one end, and then connect the cable to the socket labeled WAN on the router.
- 2 For Wired user, connect an Ethernet cable from your computer's network port to any of the LAN ports of the router.
- 3 Connect the USB devices (such as USB printer, webcam, etc) to the USB ports of the router.
- 4 Connect the power adapter from the main power supply to the router. Please do not turn on the power during the installation for safety reasons. Once the hardware setup is done, you may power on the device.

Chapter 4: Configuring Wireless Network Connection

Depending on your client's wireless adapter, you may set up Windows XP's Wireless Network Connection as follows:

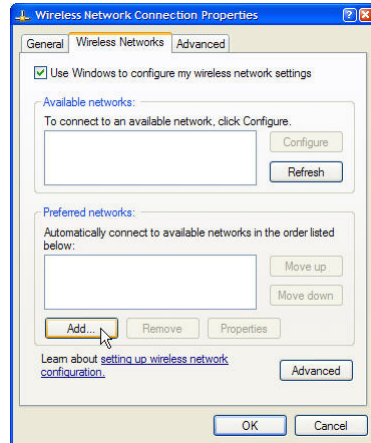
Step 1

Right-click on **Wireless Network Connection** corresponding to the wireless Ethernet adapter you wish to connect with the router, and click on **Properties**.



Step 2

At the **Wireless Networks** tab, click on the **Add** button under **Preferred Networks**.



Step 3

At the **Network name (SSID)** field, type in 'compex' (the factory default of the router). Click **OK**.



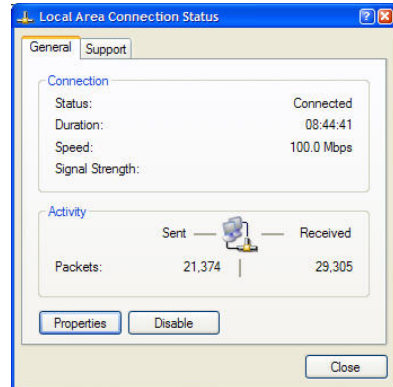
Chapter 5: Configuring TCP/IP Settings

You should configure your PC or wireless client to obtain IP address automatically. For users of Microsoft Windows XP, you may configure the TCP/IP settings as follows:

Step 1

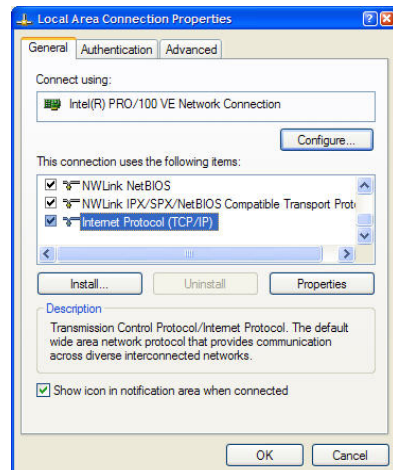
Click the **Start** button. Select **Settings** and click the **Control Panel** icon. Then double-click the **Network Connection** icon.

Right click on **Local Area Connection** or **Wireless Network Connection** corresponding to the Ethernet adapter you wish to connect to the router.



Step 2

Under **General** tab at **This connection uses the following item**, make sure the box next to **Internet Protocol (TCP/IP)** is checked. Then highlight **Internet Protocol (TCP/IP)**, and click the **Properties** button.

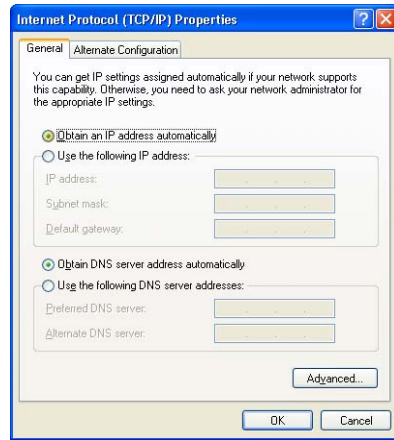


Step 3

Check the radio button next to **Obtain an IP address automatically**.

Then click the **OK** button on this page, and the **OK** button on the previous page it returns you to.

Restart your computer to complete the PC configuration.



NOTE

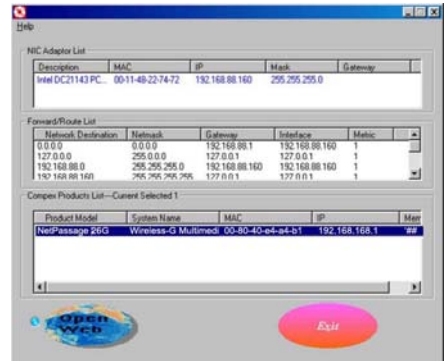
The Advanced Setup is not mentioned in this quick guide. Please refer to User's Manual for more information.

Chapter 6: Getting Started with Wizard Setup

You should configure your PC or wireless client to obtain IP address automatically. For users of Microsoft Windows XP, you may configure the TCP/IP settings as follows:

Step 1

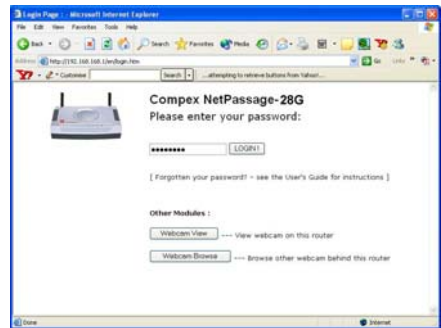
Insert the Product CD to your CD-ROM drive, run the **uConfig** program. Select **Wireless-G Multimedia Gateway** and click on **OpenWeb** button.



Step 2

Alternatively, launch Internet Explorer Browser (or Netscape). At the Address field, key in <http://192.168.168.1>.

The default password is pre-entered in the field provided. Just click on the **LOGIN!** button to access the main page of the router. The factory default password is 'password'.



Step 3

Check the radio button next to **Basic Setup**. Click on the **Next** button.



Step 4

The first page of Setup Wizard is an overview of the basic setup.

- **Internet Connection**

This functionality lets you specify the type of Internet Connection you want to use.

- **Wireless Setup**

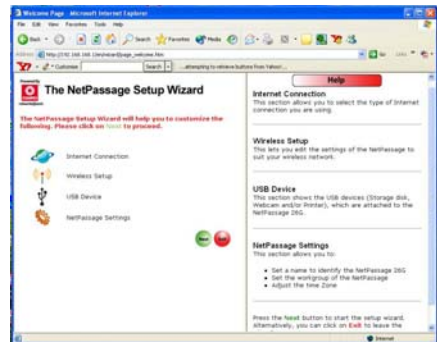
This functionality lets you configure the settings of the gateway to suit your wireless network.

- **USB Device**

This functionality gives you a quick glimpse of the summary on the USB devices that are connected to the gateway.

- **NetPassage Settings**

This functionality lets you identify the gateway and create a workgroup for the gateway. It also lets you set up the time zone of the locale.



NOTE

For more details, please refer to User's Manual. Alternatively, refer to **Help** on the right side of the main page here.

Step 5

To setup your WAN connection, select the following types of **Internet Connection** such as:

- **Dynamic IP** (used as an example in this guide)

- **Static IP**

For configuring **Static IP**, you need to manually enter IP Address, Network Mask and Gateway IP Address that are provided by your ISP.

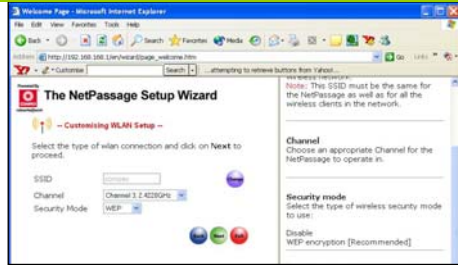
- **PPPoE**

For configuring **PPPoE**, you have to enter Username and Password that are provided by your ISP.


- **PPTP**

For configuring **PPTP**, you have to enter Username, Password, Network Mask and VPN Server that are provided by your ISP. Take note that VPN Server is the IP of your ISP PPTP server.

To proceed, click on the **Next** button.




For configuring Static IP address

IP Address	<input type="text" value="203.120.12.240"/>	
Network Mask	<input type="text" value="255.255.255.0"/>	
Gateway IP Address	<input type="text" value="203.120.12.2"/>	

For configuring PPPoE

Username	<input type="text" value="guest"/>	
Password	<input type="text"/>	

For configuring PPTP

Username	<input type="text"/>	
Password	<input type="text"/>	
IP Address	<input type="text"/>	
Network Mask	<input type="text"/>	
VPN Server	<input type="text"/>	

Step 6

To configure the following parameters:

- **SSID**

The default SSID is 'compex'. Click on the **Change** button to enter your preferred SSID name.

Remember to change your wireless clients' settings illustrated in Section 5 after the router has rebooted and the new SSID has taken effect.

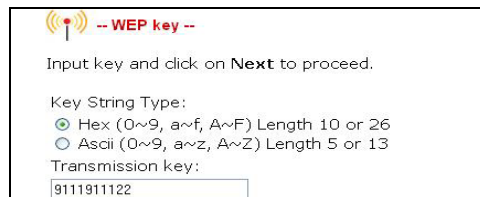
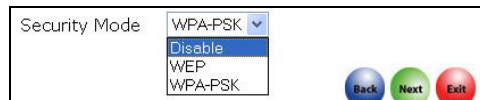
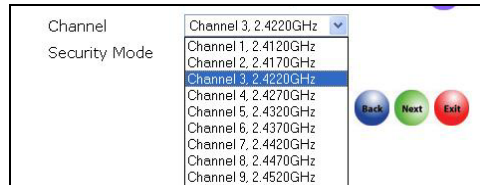
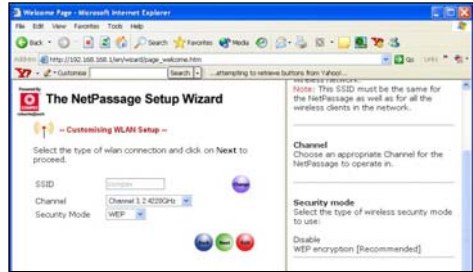
- **Channel**

Click on the down-arrow button next to **Channel**. From the list, select your preferred wireless network channel.

- **Security Mode**

You may choose to disable, enable **WEP** or enable **WPA-PSK** to secure the wireless connection.

If **WEP** is enabled, select Hex or Ascii for the key string type to be used. Then key in the transmission key.



If **WPA-PSK** is enabled, select Hex or Ascii for the key string type to be used. The default **WPA-PSK** is '11111111'. The default **GTK update** is '600'.

To proceed, click on the **Next** button.



Input key and click on **Next** to proceed.

Key String Type:

- Hex (0~9, a~f, A~F) Length 64
- Ascii (0~9, a~z, A~Z) Length 8~63

WPA-PSK:

11111111

GTK update(seconds): 600 (60~9999)

Step 7

Then the Wizard will detect if any of the USB devices such as printer, storage disk or webcam are connected to the router.

For more details on setting up USB devices, refer to User's Manual.



Step 8

If you want to allow access to your storage disk via Internet, click **Yes**. Then you will be prompted to enter the following data :

- **System Name**

The default name is 'ROUTER' so you may change it if you wish. So create a better name to identify your gateway.

- **NetBios Name**

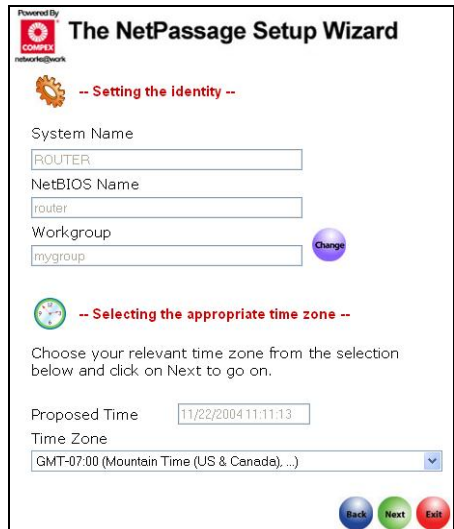
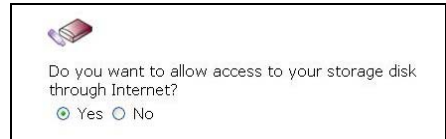
The default name is 'router' so you may change it if you wish. This name for the router will appear when you browse the MS Windows Network Neighbourhood.

- **Workgroup**

The default name is 'mygroup'. If you wish, create an appropriate name for the workgroup of your gateway.

- **Time Zone**

Set up the time zone of this locale.



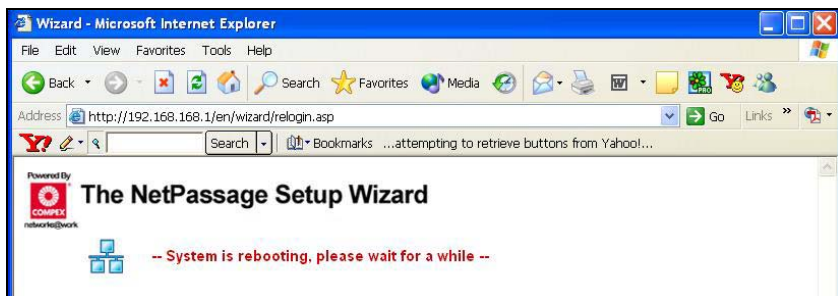
To proceed, click on the **Next** button.

Step 9

You will see the summary of the router's setup appear for your viewing. Check if the settings such as WAN IP Address, etc are correct.

Step 10

Click on the **Finish** button to save the settings and reboot the router.

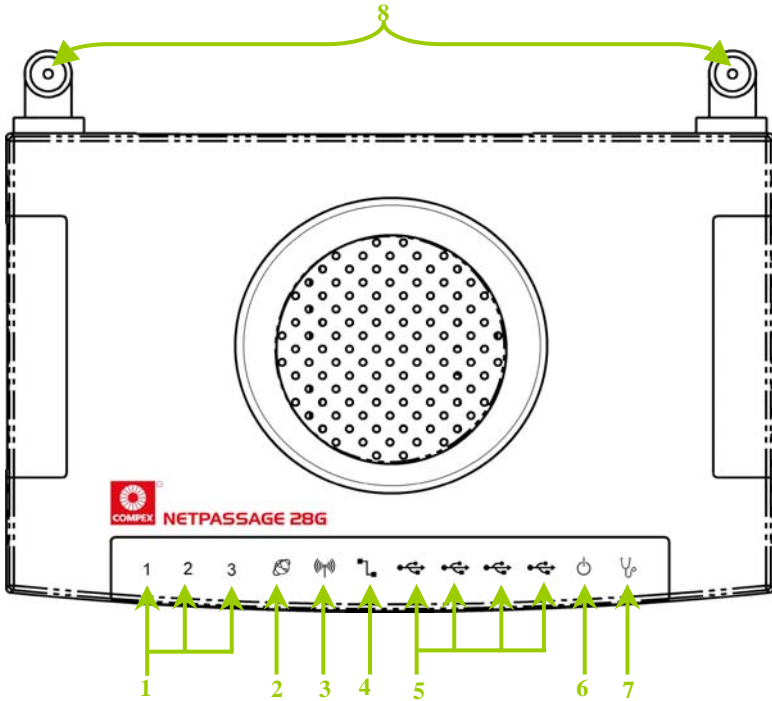


Step 11

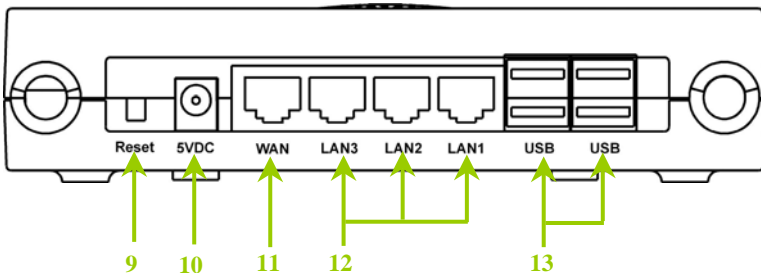
You will be returned to the Login page after 30 seconds. Alternatively, you can repeat Step 1.

Chapter 7: Panel Views and Descriptions

Top View of the Router



Back View of the Router



	Name	Description	
1	LAN Link/Act LEDs 1, 2,3	Steady Green	LAN connection is enabled.
		Flashing Green	Data transmission at LAN connection.
2	WAN (LED)	Steady Green	The WAN connection is enabled.
3	WLAN (1),(2) (Link/Activity LED)	Steady Green	At least one wireless link is present.
		Flashing Green	Activity is detected in the wireless network.
4	WAN Link/Act LED	Flashing Green	Data transmission at WAN connection.
5	USB LEDs 1,2,3,4	Steady Green	USB device is detected.
		Flashing Green	Data transmission at respective USB ports.
6	Power LED	Steady Blue	The device has powered up.
7	Diagnostic LED	Flashing Green	It indicates that the firmware is corrupted.
8	External Antennas	Foldable, non-detachable antennas	
9	Reset (Push button)	<p>To reboot, press once.</p> <p>To reset password, press and hold the button for 5 seconds. The DIAG LED will flash fast for about 5 flashes/sec before releasing the button.</p> <p>To restore the factory default settings, press and hold the button for more than 10 seconds. The DIAG LED will flash slowly for about 10 flashes/sec before releasing the button.</p>	
10	5 VDC	5V DC power input	

11	WAN (RJ45 Port)	10/100Base-T Port connects to Cable/ADSL modem.
12	LAN Ports 1,2,3	Integrated 3-port 10/100Mbps Switching (RJ45)
13	USB Ports 1, 2,3,4	Integrated USB2.0 Ports

Chapter 8: Technical Specifications

Industry Standards	<p>Wired:</p> <ul style="list-style-type: none"> - IEEE 802.3 10Base-T - IEEE 802.3u 100Base-Tx - IEEE 802.3x Flow Control <p>Wireless:</p> <ul style="list-style-type: none"> - IEEE 802.11b - IEEE 802.11g
WAN Interface	<ul style="list-style-type: none"> - 1x Auto MDI/MDI-X RJ45 Ethernet Port for external Cable/ADSL modem
WAN Type	<ul style="list-style-type: none"> - Static IP - Dynamic IP - PPP over Ethernet (PPPoE) - Point to Point Tunneling Protocol (PPTP)
LAN/WLAN Interface	<p>Wired:</p> <ul style="list-style-type: none"> - Integrated 3x Auto MDI/MDI-X 10/100Mbps Switch <p>Wireless:</p> <ul style="list-style-type: none"> - Operating channels, frequency of: 11 Channels 2.400~2.4835, US, Canada 13 Channels, 2.400~2.4970, Europe 4 Channels 2.400~2.4835, France - Direct Sequence Spread Spectrum modulation, Orthogonal Frequency Division Multiplexing modulation - Data rates: 108Mbps, 54Mbps, 48Mbps, 36Mbps, 24Mbps, 18Mbps, 12Mbps, 11Mbps, 9Mbps, 6Mbps, 5.5Mbps, 2Mbps, 1Mbps - Security:

	64-bit/128-bit WEP Wireless Pseudo VLAN WPA-PSK
USB2.0 Ports	4X integrated USB ports supporting: <ul style="list-style-type: none"> - PC Web Camera - Print Server - Storage Disk Drive
IP Addressing	All Classful/Classless subnets
Built-in DHCP Server	Yes
DHCP Reservation	Yes
NAT Firewall	Yes
Stateful Packet Inspection (SPI) Firewall	Yes
Load-Balancing/ Redundancy Fail-Over	Parallel Broadband
Virtual Server	IP and Port Forwarding, De-Militarized Zone hosting
IP Packet Filtering	Time-based, TCP Port, Source IP filtering
URL Filtering	Yes
IP Routing	Static Routing Entry
VPN Client Pass-Through	PPTP, IPSec
Configuration Interface	Web-based Configuration Menus
Profile Backup and Restore	Yes
Firmware Upgradeable	Yes
Environment Requirement	Temperature: <ul style="list-style-type: none"> - Operating : 0°C to 40°C - Storage : -20°C to 70°C

	Humidity: - Operating : 10% to 80% RH - Storage : 5% to 90% RH
Physical Dimension	174mm x 104mm x 40mm (L x W x H)
Weight	~ 0.8 Kg (including power adapter)

For more details on the router's configuration, please refer to the User's Manual in the accompanying Product CD.

This document may become superseded, in which case you may find its latest version at: <http://www.compex.com.sg>

Disclaimer: **Compex, Inc.** provides this guide without warranty of any kind, either expressed or implied, including but not limited to the implied warranties of merchantability and fitness for a particular purpose. Compex, Inc. may make improvements and/or changes to the product and/or specifications of the product described in this guide, without prior notice. Compex, Inc will not be liable for any technical inaccuracies or typographical errors found in this guide. Changes are periodically made to the information contained herein and will be incorporated into later versions of the guide. The information contained is subject to change without prior notice.

Trademark Information: **Compex**[®], **ReadyLINK**[®] and **MicroHub**[®] are registered trademarks of **Compex, Inc.** **Microsoft Windows** and the **Windows logo** are the trademarks of **Microsoft Corp.** **NetWare** is the registered trademark of **Novell Inc.** All other brand and product names are trademarks or registered trademarks of their respective owners.

Notice: Copyrights © 2006 by Compex, Inc. All rights reserved. Reproduction, adaptation, or translation without prior permission of Compex, Inc. is prohibited, except as allowed under the copyright laws.

Manual Revision by Ann

Manual Number: M-0431-V1.2C Version 1.2, January 2006

FCC NOTICE: This device has been tested and found to comply with the limits for a **Class B** digital device, pursuant to **Part 15 of the FCC Rules**. These limits are designed to provide reasonable protection against harmful interference in a residential installation. This device generates, uses and can radiate radio frequency energy and, if not installed and used in accordance with the instructions, may cause harmful interference to radio communications. However, there is no guarantee that interference will not occur in a particular installation. If this device does cause harmful interference to radio or television reception, the user is encouraged to try to correct the interference by one or more of the following measures:

- ♦ Reorient or relocate the receiving antenna.
- ♦ Increase the separation between the computer and receiver.
- ♦ Connect the computer into an outlet on a circuit different from that to which the receiver is connected.
- ♦ Consult the dealer or an experienced radio / TV technician for help.

Caution: Any changes or modifications not expressly approved by the grantee of this device could void the user's authority to operate the equipment.

FCC Compliance Statement: This device complies with Part 15 of the FCC Rules. Operation is subject to the following two conditions:

- (1) This device may not cause harmful interference, and
- (2) This device must accept any interference received, including interference that may cause undesired operation.

Products that contain a radio transmitter are labeled with FCC ID and may also carry the FCC logo.

Caution: Exposure to Radio Frequency Radiation.

To comply with the FCC RF exposure compliance requirements, the following antenna installation and device operating configurations must be satisfied:

- a. For configurations using the integral antenna, the separation distance between the antenna(s) and any person's body (including hands, wrists, feet and ankles) must be at least 2.5cm (1 inch).
- b. For configurations using an approved external antenna, the separation distance between the antenna and any person's body (including hands, wrists, feet and ankles) must be at least 20cm (8 inch).

The transmitter shall not be collocated with other transmitters or antennas.

ICES 003 Statement

This Class B digital apparatus complies with Canadian ICES-003.

DECLARATION OF CONFORMITY: *Compex, Inc. declares that the product:*

Product Name: Wireless-G Broadband Multimedia Router

Model No.: NetPassage 28G conforms to the following Product Standards:

This device complies with the Electromagnetic Compatibility Directive (89/336/EEC) issued by the Commission of the European Community. Compliance with this directive implies conformity to the following European Norms (in brackets are the equivalent international standards.)

Electromagnetic Interference (Conduction and Radiation): EN 55022 (CISPR 22)

Electromagnetic Immunity: EN 55024 (IEC61000-4-2,3,4,5,6,8,11)

Low Voltage Directive: EN 60 950: 1992+A1: 1993+A2: 1993+A3: 1995+A4: 1996+A11:1997.

Therefore, this product is in conformity with the following regional standards: FCC Class B: following the provisions of FCC Part 15 directive; **CE Mark:** following the provisions of the EC directive.

DECLARATION OF CONFORMITY: *Compex, Inc. declares that:*

The wireless card in this product complies with the R&TTE Directive (1999/5/EC) issued by the Commission of the European Community. Compliance with this directive implies conformity to the following:

EMC Standards: FCC: 47 CFR Part 15, Subpart B, 47 CFR Part 15, Subpart C (Section 15.247); CE: EN 300 328-2, EN 300 826 (EN 301 489-17)

Therefore, this product is in conformity with the following regional standards: FCC Class B: following the provisions of FCC Part 15 directive; **CE Mark:** following the provisions of the EC directive.

Manufacturer's Name: Compex Systems Pte Ltd

Address: 135 Joo Seng Road, PM Industrial Building, #08-01, Singapore 368363

WARRANTY REGISTRATION CARD

Register via the Internet at <http://www.cpx.com>
or <http://www.complex.com.sg>

[M-0088-V2.4C]



To activate the warranty, please complete this card and return to Complex within ninety (90) days from the date of purchase.

Please e-mail this warranty card to support@complex.com.sg.

Product:	Purchase Date:	Model:	Serial No:
Name:		E-mail:	
Company:			
Address:			
Postal/Zip Code:		Country:	
Phone: ()			

Note:

For purchases within U.S.A and Canada, please fax to Complex, Inc. at (714) 482 0332

For purchases outside U.S.A and Canada, please fax to Complex Systems Pte Ltd at (65) 6280-9947

Manual Number:
M-0431-V1.2C
Version 1.2
January 2006

